

Prepared for:

BANKS ENVIRONMENTAL DATA, INC.
1601 Rio Grande, Ste. 500
Austin, TX 78701



Regulatory Database Report

ASTM E1527-05/AAI Compliant

Commercial Property

Houston, TX 77007

Harris County

ES-1000

Monday, July 29, 2013

Table of Contents *Commercial Property*

Geographic Summary	3
Database Summary	4
Maps	
Summary Map - 0.25 Mile Radius	5
Summary Map - 0.5 Mile Radius	6
Summary Map - 1 Mile Radius	7
Topographic Overlay Map - 1 Mile Radius	8
Current Imagery Overlay Map - 0.5 Mile Radius	9
Soils Sub-Report	
Soil Survey Map - 0.1 Mile Radius	10
Soils Details	11
Soils Definitions	12
Water & Oil/Gas Wells Sub-Report	
Water & Oil/Gas Wells Map - 0.25 Mile Radius	13
Water & Oil/Gas Wells Details	14
Sites Summary	
Mapped Sites Summary	15
Sites Details	
Mapped Sites Details	16
Federal & State Database Definitions and Sources	60
Disclaimer	63

Geographic Summary *Commercial Property***Location**

Harris, TX

Coordinates

Longitude & Latitude in Degrees Minutes Seconds	-95° 22' 28", 29° 46' 32"
Longitude & Latitude in Decimal Degrees	-95.374472°, 29.775616°
X and Y in UTM	270440.68, 3296285.29 (Zone 15)

Elevation

Target Property lies 46.82 feet above sea level.

Zip Codes Searched

Search Distance	Zip Codes
Target Property	77007, 77201
0.25 miles	77007, 77201, 77009
0.5 miles	77007, 77201, 77009
1 mile	77002, 77201, 77007, 77201, 77009, 77019

Topos Searched

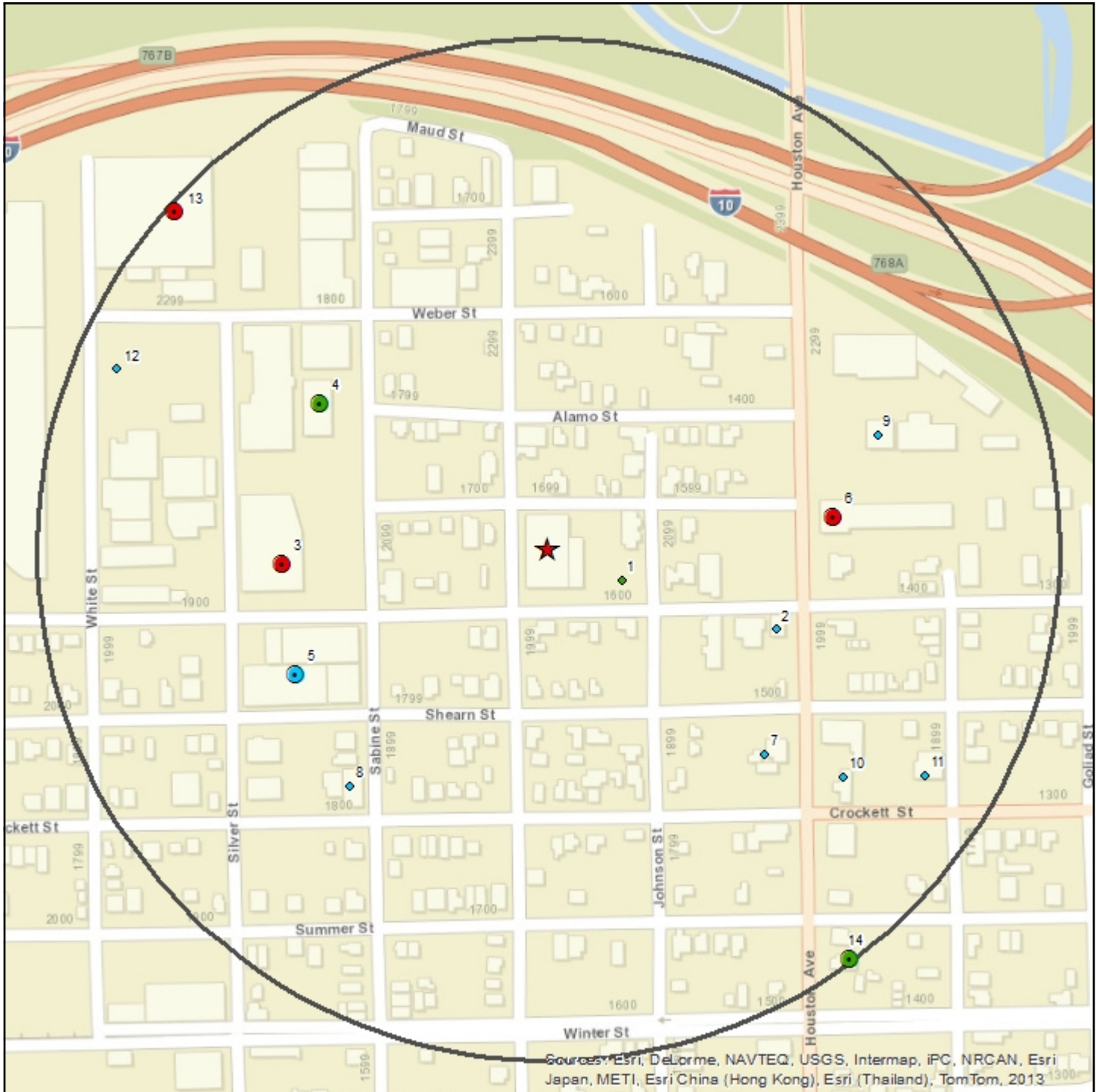
Search Distance	Topo Name
Target Property	Settegast (1983)
0.25 miles	Settegast (1983), Houston Heights (1983)
0.5 miles	Settegast (1983), Houston Heights (1983)
1 mile	Settegast (1983), Houston Heights (1983)

Database Summary Commercial Property



Databases Searched	Distance Searched	# Mapped	# Not Mapped	Total
Federal - ASTM 1527-05/AAI Required				
National Priority List (NPL)	1	0	0	0
Delisted National Priority List (DNPL)	0.5	0	0	0
CERCLIS (CER)	0.5	0	0	0
CERCLIS NFRAP (CER NFRAP)	0.5	1	0	1
RCRA CORRACTS (RCRA COR)	1	0	0	0
RCRA non-CORRACTS TSD (RCRA TSD)	0.5	0	0	0
RCRA Generators (RCRA GEN)	0.25	1	0	1
Federal Brownfields (FED BWN)	0.5	1	0	1
Federal Institutional Control (FED IC)	0.5	0	0	0
Federal Engineering Control (FED EC)	0.5	0	0	0
ERNS List (ERNS)	0.25	1	0	1
State - ASTM 1527-05/AAI Required				
State/Tribal Equivalent NPL (ST NPL)	1	1	0	1
State/Tribal Equivalent CERCLIS (ST CER)	0.5	0	0	0
State/Tribal Disposal or Landfill (SWLF)	0.5	0	0	0
State/Tribal Leaking Storage Tank (LPST)	0.5	14	0	14
State/Tribal Storage Tank (PST)	0.25	8	0	8
State/Tribal Institutional Control (ST IC)	0.25	0	0	0
State/Tribal Engineering Control (ST EC)	0.5	0	0	0
State/Tribal Voluntary Cleanup (VCP)	0.5	8	0	8
State/Tribal Brownfield (ST BWN)	0.5	0	0	0
State/Tribal Hazardous Waste (HW)	0.25	3	0	3
Non-ASTM/AAI Required Databases				
RCRA (RCRA)	0.25	2	0	2
Dry Cleaners (DRYC)	0.25	0	0	0
Total Sites Found		40	0	40

Summary Map - 0.25 Mile Radius



Sources: Esri, DeLorme, NAVTEQ, USGS, Intermap, iPC, NRCAN, Esri Japan, METI, Esri China (Hong Kong), Esri (Thailand), TomTom, 2013

Commercial Property

- | | | | |
|-------------|--------------|-------------|-------------------------------|
| Single Site | Cluster Site | Large Tract | Cluster Site with Large Tract |
| Single Site | Cluster Site | Large Tract | Cluster Site with Large Tract |
| Single Site | Cluster Site | Large Tract | Cluster Site with Large Tract |
- RCRA COR, RCRA TSD, CER, LPST, NPL, ST NPL, SWLF*
RCRA GEN, ST & FED BWN, ST & FED EC, ST & FED IC, DNPL, CER NFRAP, PST, VCP, ST CER
ERNS, HW, RCRA, DRYC

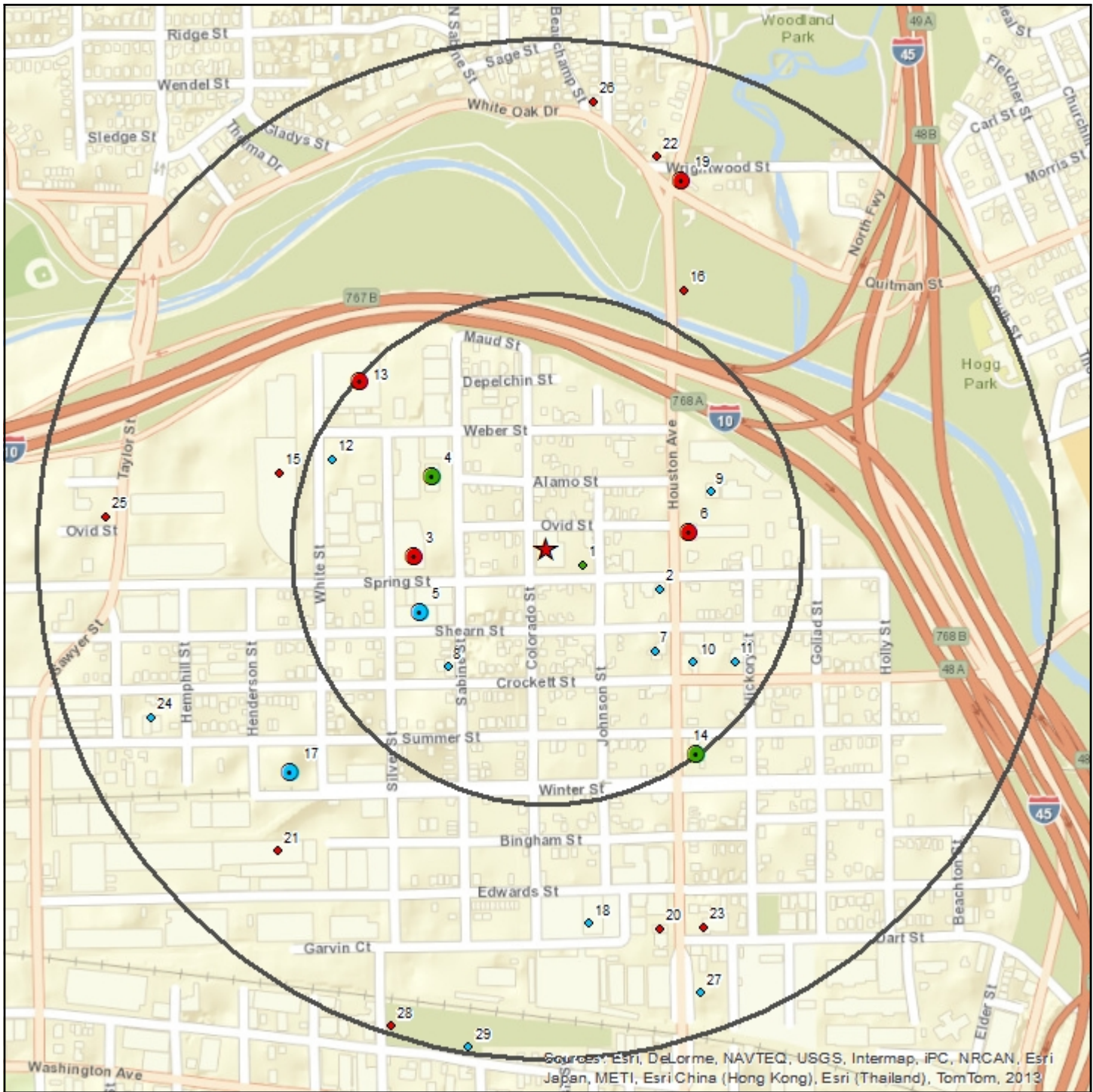
- Target Property
- Search Buffer

1 : 4,500

Lambert Conformal Conic Projection
 1983 North American Datum
 First Standard Parallel: 33° 00' 00" North
 Second Standard Parallel: 45° 00' 00" North
 Central Meridian: 96° 00' 00" West
 Latitude of Origin: 39° 00' 00" North



Summary Map - 0.5 Mile Radius



Sources: Esri, DeLorme, NAVTEQ, USGS, Intermap, iPC, NRCAN, Esri Japan, METI, Esri China (Hong Kong), Esri (Thailand), TomTom, 2013

Commercial Property

- | | | | |
|--------------------------------------------------------------------------------------------------------|--------------------------------------------------------------------------------------------------------------|--------------------------------------------------------------------------------------------------------------|-------------------------------------------------------------------------------------------------------------------------------|
| ● Single Site | ● Cluster Site | Large Tract | ■ Cluster Site with Large Tract |
| <i>RCRA COR, RCRA TSD, CER, LPST, NPL, ST NPL, SWLF</i> | | | |
| ● Single Site | ● Cluster Site | Large Tract | ■ Cluster Site with Large Tract |
| <i>RCRA GEN, ST & FED BWN, ST & FED EC, ST & FED IC, DNPL, CER NFRAP, PST, VCP, ST CER</i> | | | |
| ● Single Site | ● Cluster Site | Large Tract | ■ Cluster Site with Large Tract |
| <i>ERNS, HW, RCRA, DRYC</i> | | | |

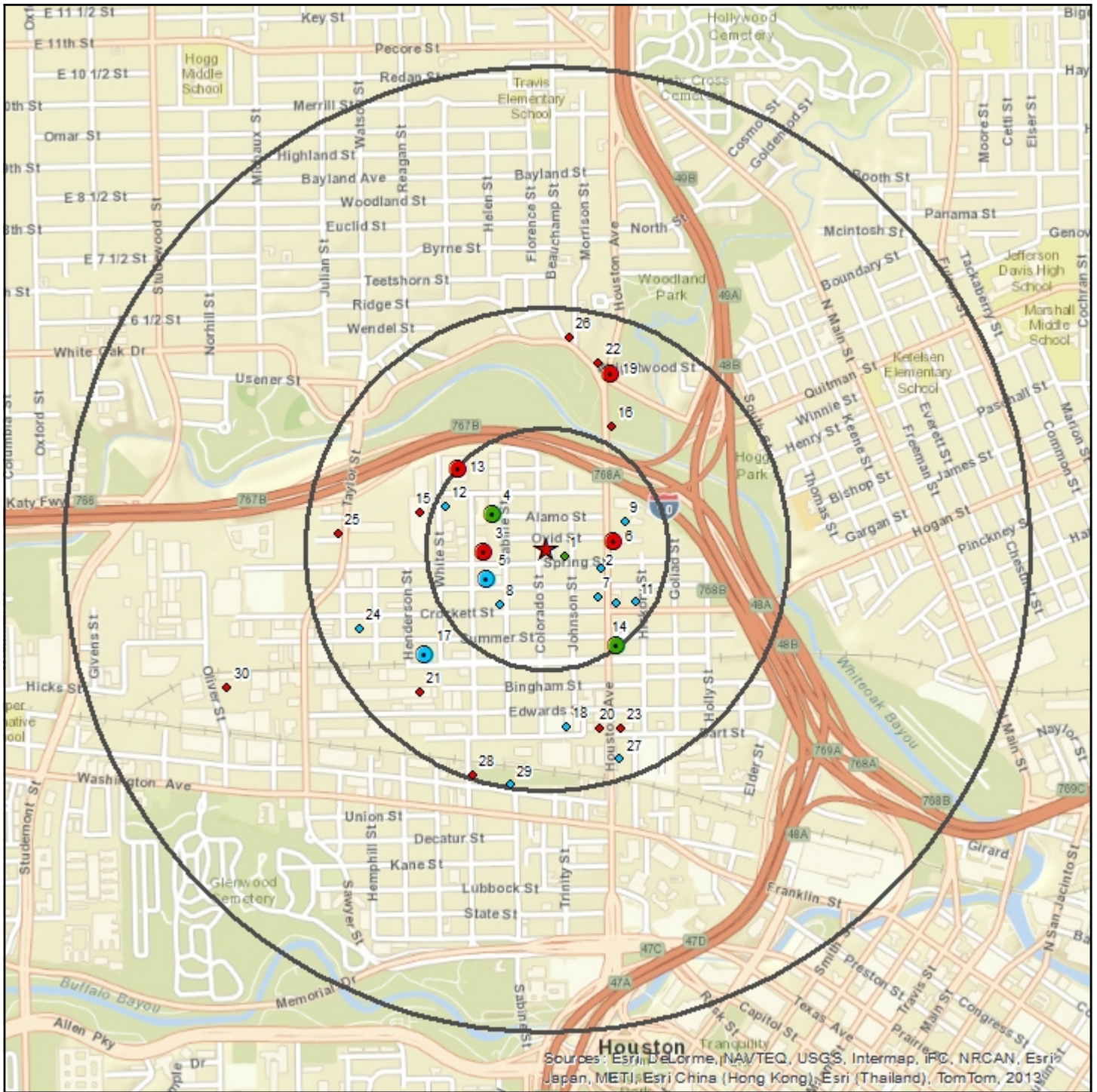
- ★ Target Property
- Search Buffer

1 : 9,000

Lambert Conformal Conic Projection
 1983 North American Datum
 First Standard Parallel: 33° 0' 00" North
 Second Standard Parallel: 45° 0' 00" North
 Central Meridian: 96° 0' 00" West
 Latitude of Origin: 39° 0' 00" North



Summary Map - 1 Mile Radius



Sources: Esri, DeLorme, NAVTEQ, USGS, Intermap, iPC, NRCAN, Esri Japan, METI, Esri China (Hong Kong), Esri (Thailand), TomTom, 2013

Commercial Property

- | | | | | |
|--------------------------------------------------|-------------------------------------------------------------------|--------------------------------------------------------------------------------------------------------------|------------------------------------------------------------------------------------|----------------------------------------------------------------------------------------------------------------|
| ● Single Site | ● Cluster Site | Large Tract | ● Cluster Site with Large Tract | ★ Target Property |
| ● Single Site | ● Cluster Site | Large Tract | ● Cluster Site with Large Tract | Search Buffer |
| ● Single Site | ● Cluster Site | Large Tract | ● Cluster Site with Large Tract | |

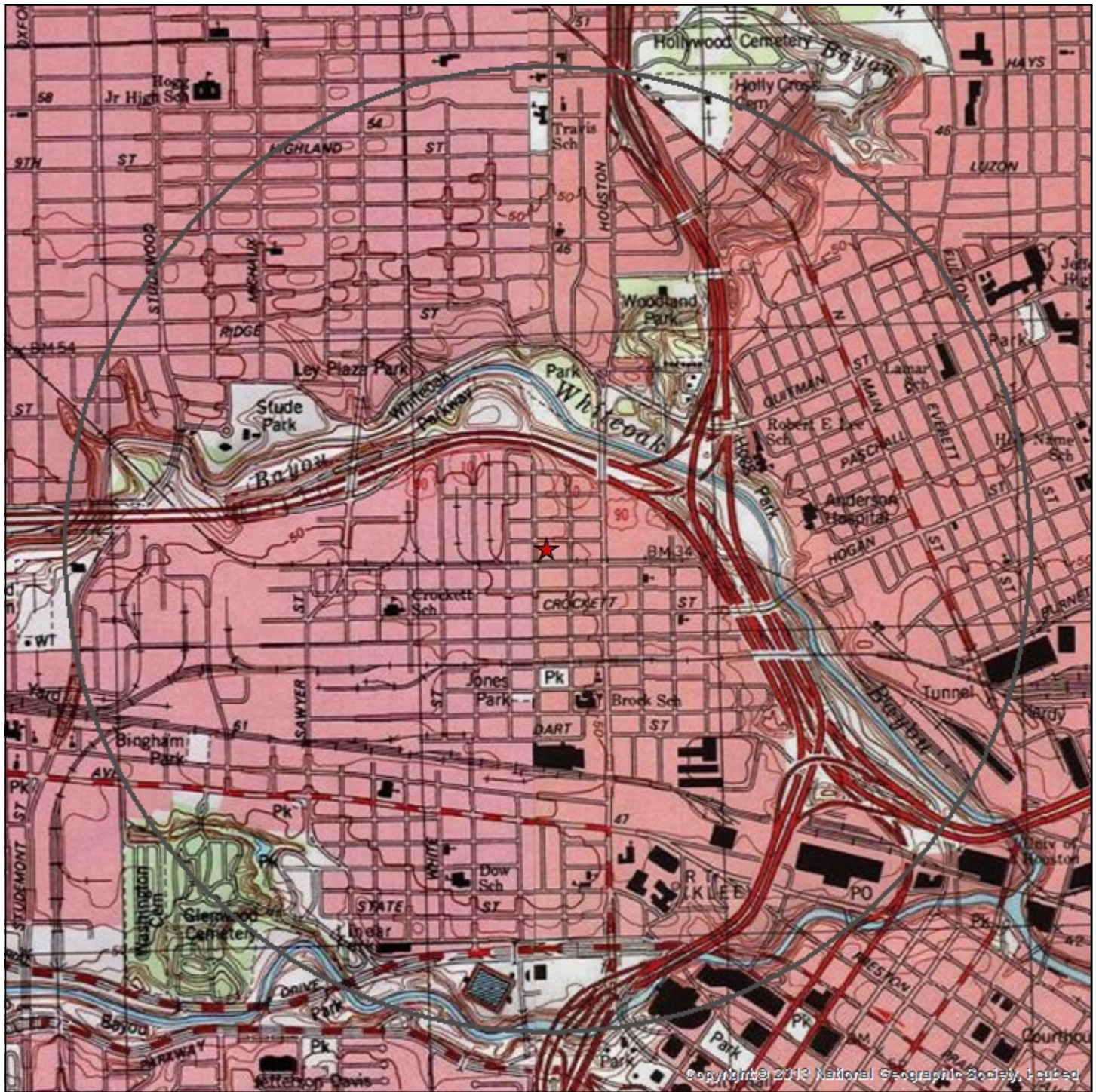
RCRA COR, RCRA TSD, CER, LPST, NPL, ST NPL, SWLF
 RCRA GEN, ST & FED BWN, ST & FED EC, ST & FED IC, DNPL, CER NFRAP, PST, VCP, ST CER
 ERNS, HW, RCRA, DRYC

1 : 19,000



Lambert Conformal Conic Projection
 1983 North American Datum
 First Standard Parallel: 33° 00' 00" North
 Second Standard Parallel: 45° 00' 00" North
 Central Meridian: 96° 00' 00" West
 Latitude of Origin: 39° 00' 00" North



Topographic Overlay Map - 1 Mile Radius



Commercial Property

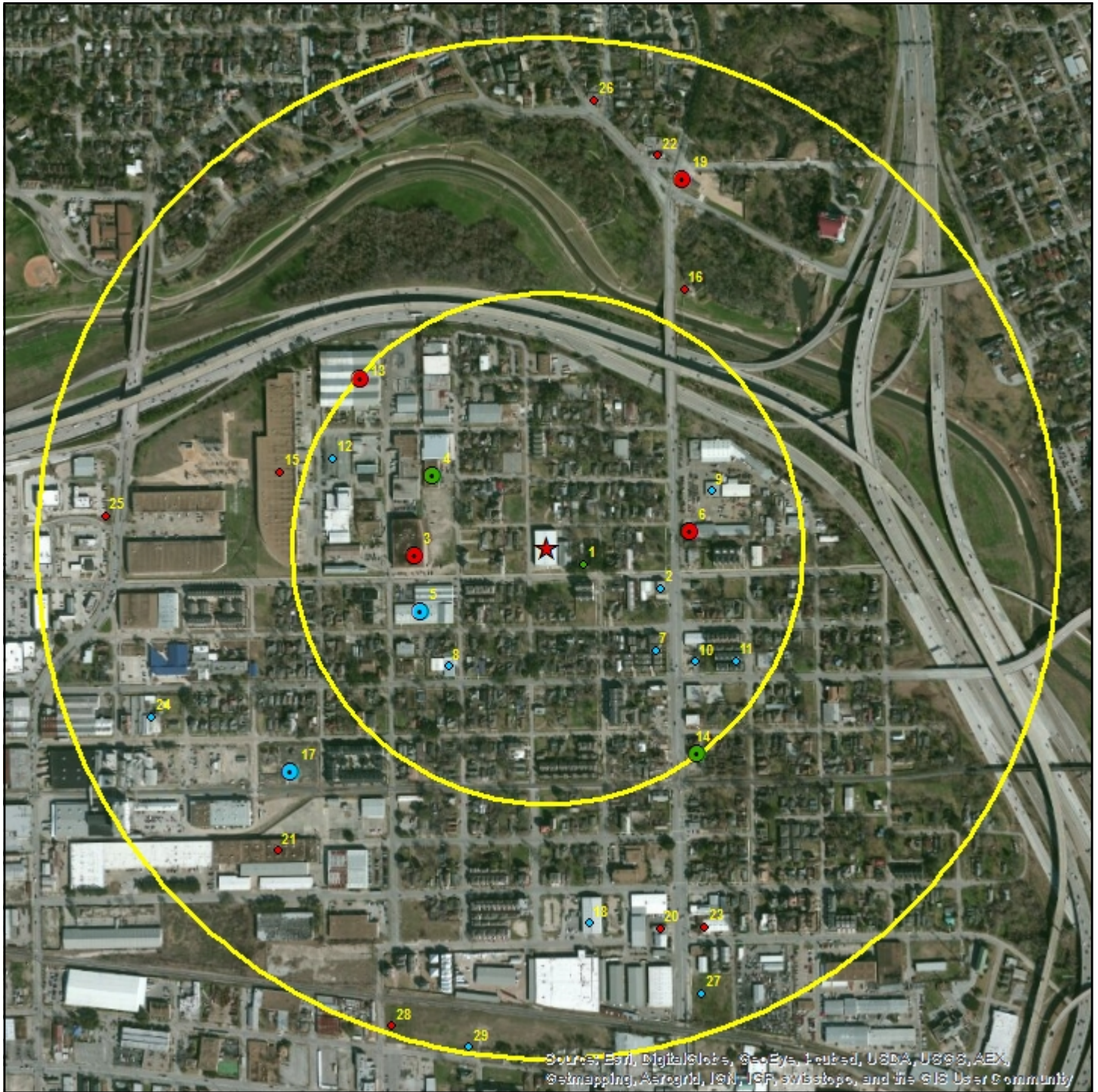
-  Target Property
-  Search Buffer

1 : 19,000



Lambert Conformal Conic Projection
 1983 North American Datum
 First Standard Parallel: 33° 00' North
 Second Standard Parallel: 45° 00' North
 Central Meridian: 96° 00' West
 Latitude of Origin: 39° 00' North

Current Imagery Overlay Map - 0.5 Mile Radius



Source: Esri, DigitalGlobe, GeoEye, AeroGRID, USDA, USGS, AEX, ©swmapping, Aerogrid, IGN, IGA, swisstopo, and the GIS User Community

Commercial Property

- | | | | | |
|-------------|--------------|-------------|-------------------------------|-----------------|
| Single Site | Cluster Site | Large Tract | Cluster Site with Large Tract | Target Property |
| Single Site | Cluster Site | Large Tract | Cluster Site with Large Tract | Search Buffer |
| Single Site | Cluster Site | Large Tract | Cluster Site with Large Tract | |

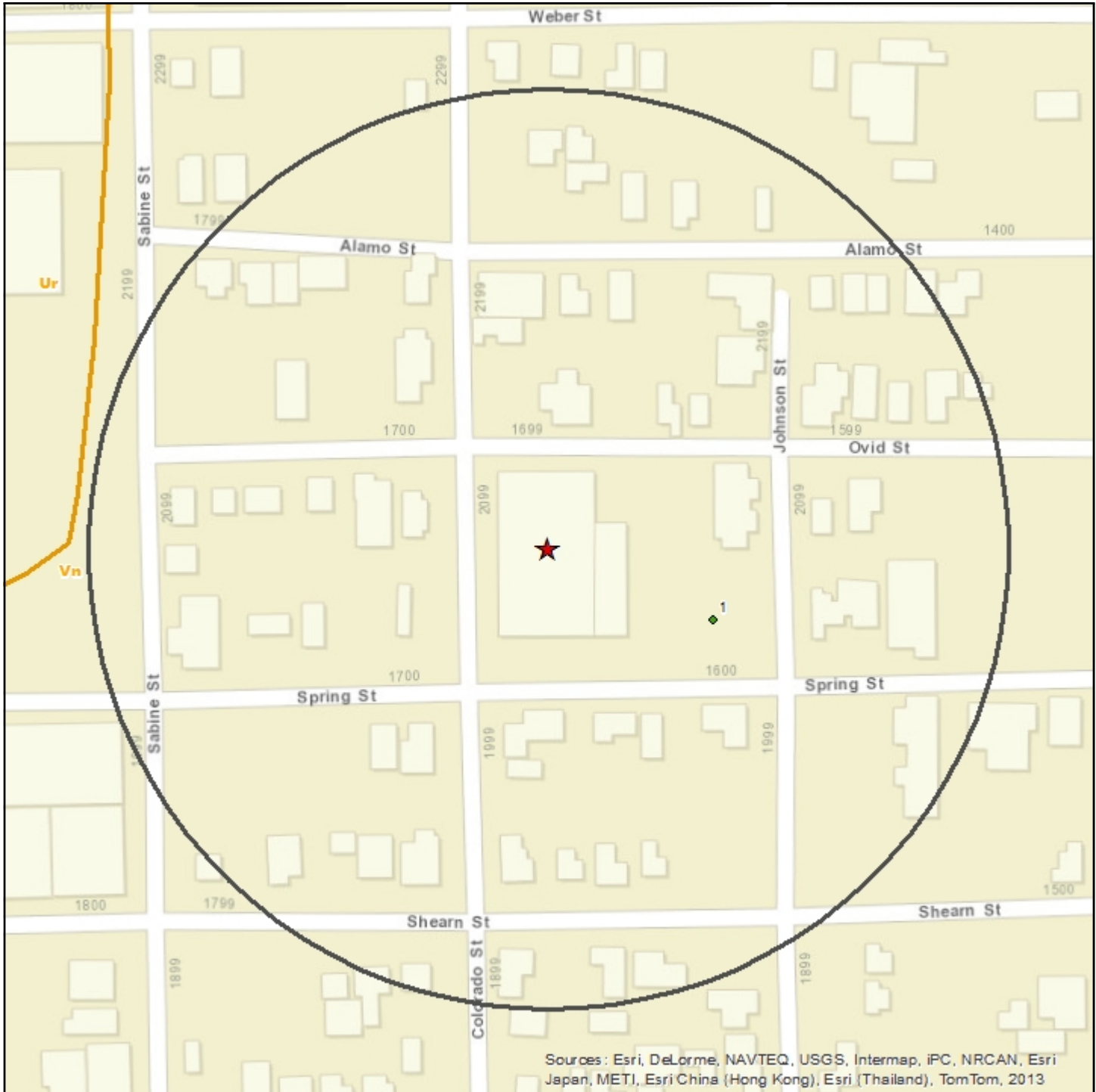
RCRA COR, RCRA TSD, CER, LPST, NPL, ST NPL, SWLF
 RCRA GEN, ST & FED BWN, ST & FED EC, ST & FED IC, DNPL, CER NFRAP, PST, VCP, ST CER
 ERNS, HW, RCRA, DRYC

1 : 9,000

Lambert Conformal Conic Projection
 1983 North American Datum
 First Standard Parallel: 33° 00' 00" North
 Second Standard Parallel: 45° 00' 00" North
 Central Meridian: 96° 00' 00" West
 Latitude of Origin: 39° 00' 00" North



Soil Survey Map - 0.1 Mile Radius



Sources: Esri, DeLorme, NAVTEQ, USGS, Intermap, iPC, NRCAN, Esri Japan, METI, Esri China (Hong Kong), Esri (Thailand), TomTom, 2013

Commercial Property

- | | | | |
|-------------|--------------|-------------|-------------------------------|
| Single Site | Cluster Site | Large Tract | Cluster Site with Large Tract |
| Single Site | Cluster Site | Large Tract | Cluster Site with Large Tract |
| Single Site | Cluster Site | Large Tract | Cluster Site with Large Tract |
- RCRA COR, RCRA TSD, CER, LPST, NPL, ST NPL, SWLF*
- RCRA GEN, ST & FED BWN, ST & FED EC, ST & FED IC, DNPL, CER NFRAP, PST, VCP, ST CER*
- ERNS, HW, RCRA, DRYC*

- Target Property
- Search Buffer
- Soils Boundary

1 : 2,000



Lambert Conformal Conic Projection
 1983 North American Datum
 First Standard Parallel: 33° 00' North
 Second Standard Parallel: 45° 00' North
 Central Meridian: 96° 00' West
 Latitude of Origin: 39° 00' North

Soils Commercial Property



Soils Types Found

Target Property	Vn
Within 0.1 miles of Target Property	Vn

Soil Type Descriptions

Vn - Vamont-Urban land complex

Hydric Status	All components are not hydric and no components are unranked.
Minimum Depth to Bedrock	

Vamont (50 percent)

Hydrologic Group	High runoff potential
Soil Drainage Class	Somewhat poorly drained
Corrosion Potential - Uncoated Steel	High
Depth to Restrictive Feature	

Horizon	Soil Texture	Upper Boundary	Lower Boundary	AASHTO	Unified
H1	clay	0 cm	20 cm	A-7-6	CH
H2	clay	20 cm	178 cm	A-7-6	CH, CL
H3	clay	178 cm	203 cm	A-7-6	CH

Urban land (35 percent)

Horizon	Soil Texture	Upper Boundary	Lower Boundary	AASHTO	Unified
H1	variable	0 cm	102 cm		

Unnamed, minor components (15 percent)

Soils Descriptions Commercial Property**AASHTO Classification Definitions**

A-1, A-1-a, A-1-b	Granular materials (35% or less passing No. 200 sieve), silt fragments, gravel and sand
A-2, A-2-4, A-2-5, A-2-6, A-2-7	Granular materials (35% or less passing No. 200 sieve), silty or clayey gravel and sand
A-3	Granular materials (35% or less passing No. 200 sieve), fine sand
A-4	Silt-Clay materials (more than 35% passing No. 200 sieve), silty soils
A-5	Silt-Clay materials (more than 35% passing No. 200 sieve), silty soils
A-6	Silt-Clay materials (more than 35% passing No. 200 sieve), clayey soils
A-7, A-7-5, A-7-6	Silt-Clay materials (more than 35% passing No. 200 sieve), clayey soils
A-8	Silt-Clay materials (more than 35% passing No. 200 sieve), clayey soils

Unified Classification Definitions

CH	Fine-grained soils, silts and clays (liquid limit is 50% or more), Fat Clay
CL, CL-A (proposed), CL-K (proposed), CL-ML, CL-O (proposed), CL-T (proposed)	Fine-grained soils, silts and clays (liquid limit is less than 50%), Lean Clay
GC, GC-GM	Coarse-grained soils, Gravels, gravel with fines, Clayey Gravel
GM	Coarse-grained soils, Gravels, gravel with fines, Silty Gravel
GP, GP-GC, GP-GM	Coarse-grained soils, Gravels, clean gravels, Poorly Graded Gravel
GW, GW-GC, GW-GM	Coarse-grained soils, Gravels, clean gravels, Well-Graded Gravel
MH, MH-A, MH-K, MH-O, MH-T	Fine-grained soils, silts and clays (liquid limit is 50% or more), Elastic Silt
ML, ML-A (proposed), ML-K (proposed), ML-O (proposed), ML-T (proposed)	Fine-grained soils, silts and clays (liquid limit is less than 50%), Silt
OH, OH-T (proposed)	Fine-grained soils, silts and clays (liquid limit is 50% or more), Organic Clay or Organic Silt
OL	Fine-grained soils, silts and clays (liquid limit is less than 50%), Organic Clay or Organic Silt
PT	Highly organic soils, Peat
SC, SC-SM	Coarse-grained soils, Sands, sands with fines, Clayey Sand
SM	Coarse-grained soils, Sands, sands with fines, Silty Sand
SP, SP-SC, SP-SM	Coarse-grained soils, Sands, clean sands, Poorly Graded Sand
SW, SW-SC, SW-SM	Coarse-grained soils, Sands, clean sands, Well-Graded Sand

Source

Natural Resources Conservation Service, Soil Survey Geographic (SSURGO) Database.

Disclaimer

This Soils Survey from Banks Environmental Data, Inc. has searched Natural Resources Conservation Service (NRCS) and the Soil Survey Geographic Database (SSURGO). All soil data presented on the map and in the details section are based on information obtained from NRCS. Although Banks performs quality assurance and quality control on all data, inaccuracies of the data and mapped locations could possibly be traced to the source. Banks Environmental Data, Inc. cannot fully guarantee the accuracy of the SSURGO database maintained by NRCS.

Water & Oil/Gas Wells Map - 0.25 Mile Radius



Sources: Esri, DeLorme, NAVTEQ, USGS, Intermap, iPC, NRCAN, Esri Japan, METI, Esri China (Hong Kong), Esri (Thailand), TomTom, 2013

Commercial Property

- Single Water Well
- Water Well Cluster
- Single Oil/Gas/Other Well
- Oil/Gas/Other Well Cluster
- Water/Oil/Gas/Other Well Cluster

- ★ Target Property
- Search Buffer
- Texas Land Survey

1 : 4,500



Lambert Conformal Conic Projection
 1983 North American Datum
 First Standard Parallel: 33° 00' North
 Second Standard Parallel: 45° 00' North
 Central Meridian: 96° 00' West
 Latitude of Origin: 39° 00' North

This well scan searched for state and federal wells currently digitized in our geospatial database. No wells were found, but more wells could exist within the search area.

Source

U.S. Geological Survey, Texas Water Development Board (GW and Submitted Driller's Report), Texas Commission of Environmental Quality (PWS), Railroad Commission of Texas (Production Data)

Disclaimer

This well scan from Banks Environmental Data, Inc. has included a digital search of state and federal wells currently digitized in our geospatial database. Since this scan includes only well data that is currently mapped in our geospatial database, more wells could exist within the search area. For a complete well search or to locate more details, please contact Banks to obtain a full Water Well Report or Oil & Gas Well/Pipeline Search Report. More detailed individual well records can also be obtained from Banks for an additional cost, please reference a Well ID # from this well scan.

All well locations are based on information obtained from state and federal sources. Although Banks performs quality assurance and quality control on all data, inaccuracies of the records and mapped locations could possibly be traced to the specific regulatory authority or individual well driller. Banks Environmental Data, Inc. cannot fully guarantee the accuracy of the data or well location(s) of the maps and records maintained by the state and federal agencies.

Mapped Sites Summary *Commercial Property*



Database	Distance from Target Property	Map ID	Facility Site Name	Facility Site Address	Site Details Page #
----------	-------------------------------	--------	--------------------	-----------------------	---------------------

*Sites are sorted by database tier, database, and distance from the target site.

GER NFRAP	0.33 miles SW	17	PUREX CORP TURCO PRODUCTS DIV	1606 HENDERSON, HOUSTON, TX 77007	16
RCRA GEN	0.14 miles SW	5	HALLIBURTON ENERGY SERVICES INC	1907 SABINE, HOUSTON, TX 77007	17
FED BWN	0.39 miles N	19		0 Wrightwood SW quad. of Wrightwood and Houston Ave., Houston, TX 77009	19
ERNS	0.04 miles SE	1		1610 SPRING, HOUSTON, TX	20
ST NPL	0.72 miles SW	30	MANY DIVERSIFIED INTERESTS INC	1520 OLIVER ST, HOUSTON, TX	21
LPST	0.13 miles W	3	SPRING STREET REALTY	1824 SPRING ST, HOUSTON, TX 77007	22
LPST	0.14 miles E	6	C AND L SUPPLY	2018 HOUSTON AVE, HOUSTON, TX 77007	23
LPST	0.25 miles NW	13	THE CECO CORP	1902 WEBER ST, HOUSTON, TX 77007	24
LPST	0.25 miles NW	13	TEJAS MATERIALS	1902 WEBER ST, HOUSTON, TX 77007	25
LPST	0.27 miles W	15	WHITE STREET RECORD CENTER	2201 WHITE ST 2001-2299 WHITE ST, HOUSTON, TX 77007	26
LPST	0.29 miles NE	16	FORMER TEXGAS SERVICE STATION	2450 HOUSTON AVE, HOUSTON, TX 77007	27
LPST	0.39 miles N	19	PARDO TIRE	2520 HOUSTON ST, HOUSTON, TX 77009	29
LPST	0.39 miles S	20	ORIENTAL LAUNDRY	1314 HOUSTON AVE, HOUSTON, TX 77007	30
LPST	0.4 miles SW	21	SILVER EAGLE DIST INC	1301 WHITE ST, HOUSTON, TX 77001	31
LPST	0.4 miles N	22	STOP N GO 2373	1514 WHITE OAK DR, HOUSTON, TX 77009	32
LPST	0.4 miles S	23	MONTALBANO TIRE CO INC	1302 HOUSTON AVE, HOUSTON, TX 77007	33
LPST	0.43 miles W	25	PIPE YARD	2313 OVID, HOUSTON, TX 77007	34
LPST	0.44 miles N	26	KING BISCUIT RESTAURANT	1606 WHITE OAK DR, HOUSTON, TX 77009	35
LPST	0.49 miles S	28	N MERFISH SUPPLY CO	1818 CENTER ST, HOUSTON, TX 77007	36
PST	0.12 miles E	2	CLEATIS A RYMAN	1917 HOUSTON Ave, HOUSTON, TX 77007	37
PST	0.13 miles W	3	SPRING STREET REALTY	1824 SPRING ST, HOUSTON, TX 77007	38
PST	0.14 miles E	6	C & L SUPPLY SUPERVISORY SERV	2018 HOUSTON AVE, HOUSTON, TX 77007	39
PST	0.15 miles SW	8	KRC ENTERPRISE INC	1802 CROCKETT, HOUSTON, TX 77007	40
PST	0.17 miles E	9	TRI-GAS	2200 HOUSTON AVE, HOUSTON, TX 77007	41
PST	0.18 miles SE	10	LA CHARRA NEGRA	1800 HOUSTON AVE, HOUSTON, TX 77007	42
PST	0.23 miles NW	12	MARTIN POULTRY EGG & FROZEN FOOD	2002 WHITE ST, HOUSTON, TX 77007	43
PST	0.25 miles NW	13	THE CECO CORPORATION	1902 WEBER ST, HOUSTON, TX 77007	44
VCP	0.13 miles W	3	Former Harris Moving & Storage	1824 Spring St., Houston, TX 77007	45
VCP	0.15 miles SE	7	North Houston Avenue Vacant Lot	1819 Houston Avenue, Houston, TX 77007-4141	46
VCP	0.22 miles SE	11	1402 Crockett	1402 Crockett, Houston, TX 77007	47
VCP	0.33 miles SW	17	Turco Products, Inc.	1606 Henderson Street, Houston, TX	48
VCP	0.37 miles S	18	Wenco Distributors	1615 Dart Street, Houston, TX 77007-4025	49
VCP	0.42 miles SW	24	Riviana Foods, Inc.	1702 Taylor St., Houston, TX 77007	50
VCP	0.46 miles S	27	Triple D Uniform Supply	1216 Houston Avenue, Houston, TX 77007-6234	51
VCP	0.49 miles S	29	Affordable Feed and Tack	1802 Center Street, Houston, TX 77007-6103	52
HW	0.13 miles NW	4	PPG INDUSTIRES 1601 ENVIRONMENTAL	2211 Sabine St, Houston, TX 77007	53
HW	0.14 miles SW	5	HALLIBURTON ENERGY SERVICES	1907 SABINE ST, HOUSTON, TX 77007	54
HW	0.25 miles SE	14	KWIKFORM AMERICA	1614 HOUSTON AVE, HOUSTON, TX 77007	56
RCRA	0.13 miles NW	4	PPG INDUSTIRES INC	2211 SABINE ST, HOUSTON, TX 77007	57
RCRA	0.25 miles SE	14	KWIKFORM AMERICA INC	1614 S HOUSTON RD, HOUSTON, TX 77002	58

End of Mapped Sites Summary Section

Mapped Sites Details: CER NFRAP (MapID 17) *Commercial Property*



CER NFRAP - CERCLIS NFRAP

Map ID #17 CER NFRAP - CERCLIS NFRAP **Source: EPA**

Site ID: 0601773 EPA ID: TXD010790046 **Banks ID: 0601773**

PUREX CORP TURCO PRODUCTS DIV Rel. Loc.: 0.33 miles SW
 1606 HENDERSON, HOUSTON, TX 77007 Elevation: 56.05 feet (+9.23)
 Contact: Soil Type: Vn

National Priority List Status: Not on the NPL
Facility Type: Not a federal facility

Action	Start Date	Completion Date
DISCOVERY		7/1/1982 12:00:00 AM
PRELIMINARY ASSESSMENT	8/1/1982	8/1/1982 12:00:00 AM
ARCHIVE SITE		8/1/1982 12:00:00 AM

End of CER NFRAP Sites Section

Mapped Sites Details: RCRA GEN (MapID 5) Commercial Property



RCRA GEN - RCRA Generators

Map ID #5	RCRA GEN - RCRA Generators	Source: EPA	
EPA Handler ID: TX0000132142	Handler Sequence Number: 9	Banks ID: TX0000132142	
HALLIBURTON ENERGY SERVICES INC 1907 SABINE, HOUSTON, TX 77007 Contact: LISA REYNA		Rel. Loc.: 0.14 miles SW Elevation: 49.89 feet (+3.07) Soil Type: Vn	
Owner Name:	HALLIBURTON ENERGY SERVICES INC		
Number of Owners:	1		
Operator Name:	HALLIBURTON ENERGY SERVICES INC		
Number of Operators:	1		
Mailing Address:	PO BOX 42810, HOUSTON, TX 77242		
Contact Name:	LISA REYNA		
Contact Address:	PO BOX 42810, HOUSTON, TX 77242		
Contact Phone:	713-865-5456		
Contact Email Address:			
Government Performance and Results Act (GPRA) Permit:	The facility does not exist on the Operating/Post-Closure Permit Baseline.		
Government Performance and Results Act (GPRA) Corrective Action:	No		
Workload Legend: L=Land Disposal I=Incineration B=Boiler/Industrial Furnace S=Storage T=Treatment			
Permit Workload:	-----		
Closure Workload:	-----		
Post-Closure Workload:	-----		
Subject to Corrective Action:	No		
Subject to Corrective Action 3004:	No		
Subject to Corrective Action Non-TSDF:	No		
Corrective Action Workload:	No		
Generator Status:	Small Quantity Generator		
Nuclear Mixed Waste Handler:	Yes		
Onsite Burner Exemption:	No		
Furnace Exemption:	No		
Underground Injection Activity:	No		
NAIC Description 1:	Other Fabricated Wire Product Manufacturing		
NAIC Description 2:			
NAIC Description 3:			
NAIC Description 4:			
Federal Generator Class:	Small Quantity Generator		
State Generator Class:			
Environmental Controls in Place:	No		
Institutional Controls in Place:	No		
Groundwater Controls in Place:	No		
Significant Non-Compliance:	No		
Unaddressed Significant Non-Complier:	No		
Addressed Significant Non-Complier:	No		
Significant Non-Complier with Compliance Schedule:	No		
Enforcement Description	Responsible Enforcement Agency	Enforcement Date	Penalty Description
Evaluation Description	Responsible Agency	Evaluation Date	Violation Found
Violation Description	Violation Determined By	Violation Date	Actual Resolution Date Scheduled Resolution Date
Hazardous Waste Description			
CADMIUM			

Mapped Sites Details: RCRA GEN (MapID 5) Commercial Property

Continued from Previous Page

CHROMIUM
CORROSIVE WASTE
DESCRIPTION
IGNITABLE WASTE
LEAD
<p>THE FOLLOWING SPENT HALOGENATED SOLVENTS USED IN DEGREASING: TETRACHLOROETHYLENE, TRICHLOROETHYLENE, METHYLENE CHLORIDE, 1,1,1-TRICHLOROETHANE, CARBON TETRACHLORIDE AND CHLORINATED FLUOROCARBONS; ALL SPENT SOLVENT MIXTURES/BLENDS USED IN DEGREASING CONTAINING, BEFORE USE, A TOTAL OF TEN PERCENT OR MORE (BY VOLUME) OF ONE OR MORE OF THE ABOVE HALOGENATED SOLVENTS OR THOSE SOLVENTS LISTED IN F002, F004, AND F005; AND STILL BOTTOMS FROM THE RECOVERY OF THESE SPENT SOLVENTS AND SPENT SOLVENT MIXTURES.</p> <p>THE FOLLOWING SPENT HALOGENATED SOLVENTS: TETRACHLOROETHYLENE, METHYLENE CHLORIDE, TRICHLOROETHYLENE, 1,1,1-TRICHLOROETHANE, CHLOROBENZENE, 1,1,2-TRICHLORO-1,2,2-TRIFLUOROETHANE, ORTHO-DICHLOROBENZENE, TRICHLOROFLUOROMETHANE, AND 1,1,2, TRICHLOROETHANE; ALL SPENT SOLVENT MIXTURES/BLENDS CONTAINING, BEFORE USE, A TOTAL OF TEN PERCENT OR MORE (BY VOLUME) OF ONE OR MORE OF THE ABOVE HALOGENATED SOLVENTS OR THOSE SOLVENTS LISTED IN F001, F004, AND F005; AND STILL BOTTOMS FROM THE RECOVERY OF THESE SPENT SOLVENTS AND SPENT SOLVENT MIXTURES.</p> <p>THE FOLLOWING SPENT NONHALOGENATED SOLVENTS: TOLUENE, METHYL ETHYL KETONE, CARBON DISULFIDE, ISOBUTANOL, PYRIDINE, BENZENE, 2-ETHOXYETHANOL, AND 2-NITROPROPANE; ALL SPENT SOLVENT MIXTURES/BLENDS CONTAINING, BEFORE USE, A TOTAL OF TEN PERCENT OR MORE (BY VOLUME) OF ONE OR MORE OF THE ABOVE NONHALOGENATED SOLVENTS OR THOSE SOLVENTS LISTED IN F001, F002, OR F004; AND STILL BOTTOMS FROM THE RECOVERY OF THESE SPENT SOLVENTS AND SPENT SOLVENT MIXTURES.</p> <p>THE FOLLOWING SPENT NONHALOGENATED SOLVENTS: XYLENE, ACETONE, ETHYL ACETATE, ETHYL BENZENE, ETHYL ETHER, METHYL ISOBUTYL KETONE, N-BUTYL ALCOHOL, CYCLOHEXANONE, AND METHANOL; ALL SPENT SOLVENT MIXTURES/BLENDS CONTAINING, BEFORE USE, ONLY THE ABOVE SPENT NONHALOGENATED SOLVENTS; AND ALL SPENT SOLVENT MIXTURES/BLENDS CONTAINING, BEFORE USE, ONE OR MORE OF THE ABOVE NONHALOGENATED SOLVENTS, AND A TOTAL OF TEN PERCENT OR MORE (BY VOLUME) OF ONE OR MORE OF THOSE SOLVENTS LISTED IN F001, F002, F004, AND F005; AND STILL BOTTOMS FROM THE RECOVERY OF THESE SPENT SOLVENTS AND SPENT SOLVENT MIXTURES.</p>

End of RCRA GEN Sites Section

Mapped Sites Details: FED BWN (MapID 19) Commercial Property**FED BWN - Federal Brownfields**

Map ID #19	FED BWN - Federal Brownfields	Source: EPA
EPA Property ID: 124361	Secondary ID: NA	Banks ID: 124361
0 Wrightwood SW quad. of Wrightwood and Houston Ave., Houston, TX 77009		Rel. Loc.: 0.39 miles N Elevation: 29.23 feet (-17.59)
Contact:		Soil Type: Vn
Acres:	0.28	
Parcel Number:		
Current Owner:	Houston Parks Board	
Current Use:		
Former Use:	A small 0.28 acre piece of land that will eventually be used to increase the overall parkland of Woodland Park in Houston.	
State/Tribal ID:		
State/Tribal Enroll Date:		
No Further Action Date:		
Institutional Control Required:	Unknown	
Institutional Control in Place:		
Date Institutional Control Required:		
Proprietary Controls:		
Government Controls:		
Additional Institutional Control Information:		
Action	Start Date	Completion Date
Phase I Environmental Assessment	4/7/2010	9/28/2010
Site Name	Recipient Name	
0 Wrightwood	Houston, City of	
Media Affected		
Unknown		

End of FED BWN Sites Section

Mapped Sites Details: ERNS (MapID 1) Commercial Property**ERNS - ERNS List**

Map ID #1	ERNS - ERNS List	Source: EPA/National Response Center
NRC Report #: 363727	Secondary ID: NA	Banks ID: 363727
1610 SPRING, HOUSTON, TX		Rel. Loc.: 0.04 miles SE Elevation: 46.91 feet (+.09)
Contact:		Soil Type: Vn
Responsible Party:	SOUTHWEST COCA COLA	
Incident Location:		
Incident Date/Time:	10/8/1996 12:00 PM	
Cause of Incident:	TRANSPORT ACCIDENT	
Description of Incident:	TRACTOR TRAILER SADDLE TANK RUPTURED BY A RAILROAD GRADE CROSSING	
Incident Type:	MOBILE	
Additional Information:		
Any Fatalities:	Unknown	
Number of Fatalities:		
Remedial Action Taken:		
Medium Affected:	LAND	
Medium Description:	ASPHALT>DRAIN	
Materials Spilled:	OIL: DIESEL	
Railroad Involved:		
Pipeline Type Involved:	UNKNOWN	
Source:	UNAVAILABLE	

End of ERNS Sites Section

Mapped Sites Details: ST NPL (MapID 30) Commercial Property**ST NPL - State/Tribal Equivalent NPL**

Map ID #30	ST NPL - State/Tribal Equivalent NPL	Source: TCEQ
TCEQ Regulated ID: RN105166813	TCEQ Internal ID: SUP042	Banks ID: RN105166813
MANY DIVERSIFIED INTERESTS INC 1520 OLIVER ST, HOUSTON, TX Contact: Winsor, Phil		Rel. Loc.: 0.72 miles SW Elevation: 55.4 feet (+8.58) Soil Type: Ur
Status:	ACTIVE	
Status Date:	2/21/1996	
HRS Score:	32.07	
Additional Site Information:	OPERATION & MAINTENANCE, CLEANUP COMPL-PRELIM CLOSE OUT RPT APPR	
Link to Additional Information:	http://www.tceq.state.tx.us/remediation/superfund/epa/mdia	

End of ST NPL Sites Section

Mapped Sites Details: LPST (MapID 3) Commercial Property



LPST - State/Tribal Leaking Storage Tank

Map ID #3	LPST - State/Tribal Leaking Storage Tank		Source: TCEQ
LPST ID: 118328	Facility ID: 0010677		Banks ID: 118328
SPRING STREET REALTY 1824 SPRING ST, HOUSTON, TX 77007 Contact: JOE HARRIS			Rel. Loc.: 0.13 miles W Elevation: 50.86 feet (+4.04) Soil Type: Ur
Status:	Final concurrence pending documentation of well plugging		
Leak Discovery Date:	4/7/2010		
Damage Description:	gw impacted, no apparent threats or impacts to receptors		
Tank #	#1	#1	#2
Status:	Removed from Ground	Removed from Ground	Removed from Ground
Status Date:	5/9/1991	5/28/2010	5/9/1991
Capacity:	6000	10000	7800
Install Date:	1/1/1956	5/1/1991	1/1/1981
Last Used Date:			
Above or Below Ground Tank:	below	below	below
Unit ID:			
Construction Material:	Steel	FRP (fiberglass-reinforced plastic)	FRP (fiberglass-reinforced plastic)
Other Construction Material Description:			
Piping Material:	Steel	FRP (fiberglass-reinforced plastic)	Steel
Other Piping Material Description:			
Tank Contents:			
Other Tank Contents Description:			
Tank #	#2	#3	
Status:	Removed from Ground	Removed from Ground	
Status Date:	5/28/2010	5/9/1991	
Capacity:	10000	7300	
Install Date:	5/1/1991	1/1/1981	
Last Used Date:			
Above or Below Ground Tank:	below	below	
Unit ID:			
Construction Material:	FRP (fiberglass-reinforced plastic)	FRP (fiberglass-reinforced plastic)	
Other Construction Material Description:			
Piping Material:	FRP (fiberglass-reinforced plastic)	Steel	
Other Piping Material Description:			
Tank Contents:			
Other Tank Contents Description:			

Mapped Sites Details: LPST (MapID 6) *Commercial Property*



Map ID #6	LPST - State/Tribal Leaking Storage Tank		Source: TCEQ
LPST ID: 105024	Facility ID: 0034824		Banks ID: 105024
C AND L SUPPLY		Rel. Loc.: 0.14 miles E	
2018 HOUSTON AVE, HOUSTON, TX 77007		Elevation: 42.24 feet (-4.58)	
Contact: CARL VICK		Soil Type: Vn	
Status:	Final concurrence issued, case close		
Leak Discovery Date:	9/17/1991		
Damage Description:	minor soil contamination - no remedial action required		
Tank #	#1	#2	
Status:	Removed from Ground	Removed from Ground	
Status Date:	9/5/1991	9/5/1991	
Capacity:	2000	2000	
Install Date:	5/1/1979	5/1/1979	
Last Used Date:			
Above or Below Ground Tank:	below	below	
Unit ID:			
Construction Material:	Steel	Steel	
Other Construction Material Description:			
Piping Material:	Steel	Steel	
Other Piping Material Description:			
Tank Contents:			
Other Tank Contents Description:			

Mapped Sites Details: LPST (MapID 13) Commercial Property

Map ID #13	LPST - State/Tribal Leaking Storage Tank		Source: TCEQ
LPST ID: 105183	Facility ID: 0023607		Banks ID: 105183
THE CECO CORP 1902 WEBER ST, HOUSTON, TX 77007 Contact: DAVID PASATERE			Rel. Loc.: 0.25 miles NW Elevation: 46.86 feet (+.04) Soil Type: Ur
Status:	Final concurrence issued, case close		
Leak Discovery Date:	11/3/1992		
Damage Description:	minor soil contamination - does not require a rap		
Tank #	#1	#2	
Status:	Removed from Ground	Removed from Ground	
Status Date:	10/26/1992	10/26/1992	
Capacity:	8000	2000	
Install Date:	1/1/1971	1/1/1971	
Last Used Date:			
Above or Below Ground Tank:	below	below	
Unit ID:			
Construction Material:	Steel	Steel	
Other Construction Material Description:			
Piping Material:	Steel	Steel	
Other Piping Material Description:			
Tank Contents:			
Other Tank Contents Description:			

Mapped Sites Details: LPST (MapID 13) *Commercial Property*

Map ID #13	LPST - State/Tribal Leaking Storage Tank	Source: TCEQ
LPST ID: 116895	Facility ID: NA	Banks ID: 116895
TEJAS MATERIALS 1902 WEBER ST, HOUSTON, TX 77007 Contact: BRIAN HUGHLEY		Rel. Loc.: 0.25 miles NW Elevation: 46.86 feet (+.04) Soil Type: Ur
Status:	Preassessment / release determination	
Leak Discovery Date:	4/5/2006	
Damage Description:	assessment incomplete, no apparent receptors impacted	

Mapped Sites Details: LPST (MapID 15) Commercial Property

Map ID #15	LPST - State/Tribal Leaking Storage Tank	Source: TCEQ
LPST ID: 107784	Facility ID: 0058496	Banks ID: 107784
WHITE STREET RECORD CENTER		Rel. Loc.: 0.27 miles W
2201 WHITE ST 2001-2299 WHITE ST, HOUSTON, TX 77007		Elevation: 52.26 feet (+5.44)
Contact: BILL BOSTINE		Soil Type: Ur
Status:	Final concurrence issued, case close	
Leak Discovery Date:	1/20/1994	
Damage Description:	gw impacted, no apparent threats or impacts to receptors	
Tank #	#1	
Status:	Removed from Ground	
Status Date:	12/21/1993	
Capacity:	12000	
Install Date:	5/1/1981	
Last Used Date:		
Above or Below Ground Tank:	below	
Unit ID:		
Construction Material:	FRP (fiberglass-reinforced plastic)	
Other Construction Material Description:		
Piping Material:		
Other Piping Material Description:		
Tank Contents:		
Other Tank Contents Description:		

Mapped Sites Details: LPST (MapID 16) *Commercial Property*



Map ID #16	LPST - State/Tribal Leaking Storage Tank		Source: TCEQ
LPST ID: 108168	Facility ID: 0067288		Banks ID: 108168
FORMER TEXGAS SERVICE STATION			Rel. Loc.: 0.29 miles NE
2450 HOUSTON AVE, HOUSTON, TX 77007			Elevation: 24.21 feet (-22.62)
Contact: LEE HERMAN			Soil Type: Vn
Status:	Final concurrence issued, case close		
Leak Discovery Date:	5/17/1994		
Damage Description:	gw impacted, no apparent threats or impacts to receptors		
Tank #	#1	#10	#11
Status:	Removed from Ground	Removed from Ground	Removed from Ground
Status Date:	10/3/1995	10/5/1995	10/30/1995
Capacity:	8000	6000	1000
Install Date:	8/31/1987	8/31/1987	8/31/1987
Last Used Date:			
Above or Below Ground Tank:	below	below	below
Unit ID:			
Construction Material:			
Other Construction Material Description:			
Piping Material:			
Other Piping Material Description:			
Tank Contents:			
Other Tank Contents Description:			
Tank #	#2	#3	#4
Status:	Removed from Ground	Removed from Ground	Removed from Ground
Status Date:	10/3/1995	10/3/1995	10/4/1995
Capacity:	6000	1000	6000
Install Date:	8/31/1987	8/31/1987	8/31/1987
Last Used Date:			
Above or Below Ground Tank:	below	below	below
Unit ID:			
Construction Material:			
Other Construction Material Description:			
Piping Material:			
Other Piping Material Description:			
Tank Contents:			
Other Tank Contents Description:			
Tank #	#5	#6	#7
Status:	Removed from Ground	Removed from Ground	Removed from Ground
Status Date:	10/4/1995	10/4/1995	10/5/1995
Capacity:	1000	6000	1000
Install Date:	8/31/1987	8/31/1987	8/31/1987
Last Used Date:			
Above or Below Ground Tank:	below	below	below
Unit ID:			
Construction Material:			
Other Construction Material Description:			
Piping Material:			
Other Piping Material Description:			
Tank Contents:			
Other Tank Contents Description:			
Tank #	#8	#9	
Status:	Removed from Ground	Removed from Ground	

Mapped Sites Details: LPST (MapID 16) *Commercial Property**Continued from Previous Page*

Status Date:	10/5/1995	10/5/1995
Capacity:	6000	6000
Install Date:	8/31/1987	8/31/1987
Last Used Date:		
Above or Below Ground Tank:	below	below
Unit ID:		
Construction Material:		
Other Construction Material Description:		
Piping Material:		
Other Piping Material Description:		
Tank Contents:		
Other Tank Contents Description:		

Mapped Sites Details: LPST (MapID 19) Commercial Property

Map ID #19	LPST - State/Tribal Leaking Storage Tank		Source: TCEQ
LPST ID: 103946	Facility ID: 0063392		Banks ID: 103946
PARDO TIRE			Rel. Loc.: 0.39 miles N
2520 HOUSTON ST, HOUSTON, TX 77009			Elevation: 29.23 feet (-17.59)
Contact: TRACY LEWIS			Soil Type: Vn
Status:	Final concurrence issued, case close		
Leak Discovery Date:	7/21/1992		
Damage Description:	minor soil contamination - does not require a rap		
Tank #	#1	#2	#3
Status:	Removed from Ground	Removed from Ground	Removed from Ground
Status Date:	7/9/1992	7/9/1992	7/9/1992
Capacity:	1000	1000	500
Install Date:	8/31/1987	8/31/1987	8/31/1987
Last Used Date:			
Above or Below Ground Tank:	below	below	below
Unit ID:			
Construction Material:	Steel	Steel	Steel
Other Construction Material Description:			
Piping Material:	Steel	Steel	Steel
Other Piping Material Description:			
Tank Contents:			
Other Tank Contents Description:			

Mapped Sites Details: LPST (MapID 20) Commercial Property

Map ID #20	LPST - State/Tribal Leaking Storage Tank	Source: TCEQ
LPST ID: 093543	Facility ID: 0015276	Banks ID: 093543
ORIENTAL LAUNDRY 1314 HOUSTON AVE, HOUSTON, TX 77007 Contact: GEORGE FODELL		Rel. Loc.: 0.39 miles S Elevation: 46.45 feet (-.37) Soil Type: Ur
Status:	Final concurrence issued, case close	
Leak Discovery Date:	8/22/1989	
Damage Description:	soil contamination only, requires full site assessment & rap	
Tank #	#1	
Status:	Removed from Ground	
Status Date:	7/1/1989	
Capacity:	1000	
Install Date:	1/1/1974	
Last Used Date:		
Above or Below Ground Tank:	below	
Unit ID:		
Construction Material:	Steel	
Other Construction Material Description:		
Piping Material:	Steel	
Other Piping Material Description:		
Tank Contents:		
Other Tank Contents Description:		

Mapped Sites Details: LPST (MapID 21) *Commercial Property*



Map ID #21	LPST - State/Tribal Leaking Storage Tank		Source: TCEQ
LPST ID: 093568	Facility ID: 0042285		Banks ID: 093568
SILVER EAGLE DIST INC 1301 WHITE ST, HOUSTON, TX 77001 Contact: BOB BOBLITT			Rel. Loc.: 0.4 miles SW Elevation: 52.19 feet (+5.37) Soil Type: Ur
Status:	Final concurrence issued, case close		
Leak Discovery Date:	8/28/1989		
Damage Description:	gw impacted, no apparent threats or impacts to receptors		
Tank #	#1	#1	#2
Status:	Removed from Ground	Removed from Ground	Removed from Ground
Status Date:	12/31/1989	11/7/2007	1/5/1999
Capacity:	10000	10000	10000
Install Date:	1/1/1983	12/14/1998	11/1/1989
Last Used Date:			
Above or Below Ground Tank:	below	below	below
Unit ID:			
Construction Material:	FRP (fiberglass-reinforced plastic)	Composite (steel w/external FRP cladding)	Composite (steel w/external FRP cladding)
Other Construction Material Description:			
Piping Material:	FRP (fiberglass-reinforced plastic)	FRP (fiberglass-reinforced plastic)	FRP (fiberglass-reinforced plastic)
Other Piping Material Description:			
Tank Contents:			
Other Tank Contents Description:			
Tank #	#2	#3	#4
Status:	Removed from Ground	Removed from Ground	Removed from Ground
Status Date:	11/8/2007	1/4/1999	1/5/1999
Capacity:	10000	10000	2000
Install Date:	12/14/1998	1/1/1983	1/1/1983
Last Used Date:			
Above or Below Ground Tank:	below	below	below
Unit ID:			
Construction Material:	Composite (steel w/external FRP cladding)	FRP (fiberglass-reinforced plastic)	FRP (fiberglass-reinforced plastic)
Other Construction Material Description:			
Piping Material:	FRP (fiberglass-reinforced plastic)	FRP (fiberglass-reinforced plastic)	FRP (fiberglass-reinforced plastic)
Other Piping Material Description:			
Tank Contents:			
Other Tank Contents Description:			
Tank #	#5	#6	
Status:	Removed from Ground	Removed from Ground	
Status Date:	12/31/1983	12/31/1983	
Capacity:	10000	10000	
Install Date:	1/1/1971	1/1/1971	
Last Used Date:			
Above or Below Ground Tank:	below	below	
Unit ID:			
Construction Material:	FRP (fiberglass-reinforced plastic)	FRP (fiberglass-reinforced plastic)	
Other Construction Material Description:			
Piping Material:	FRP (fiberglass-reinforced plastic)	FRP (fiberglass-reinforced plastic)	
Other Piping Material Description:			
Tank Contents:			
Other Tank Contents Description:			

Mapped Sites Details: LPST (MapID 22) *Commercial Property*



Map ID #22	LPST - State/Tribal Leaking Storage Tank		Source: TCEQ
LPST ID: 115089	Facility ID: 0025216		Banks ID: 115089
STOP N GO 2373			Rel. Loc.: 0.4 miles N
1514 WHITE OAK DR, HOUSTON, TX 77009			Elevation: 30.32 feet (-16.5)
Contact: C. SHAY WIDEMAN			Soil Type: An
Status:	Final concurrence issued, case close		
Leak Discovery Date:	11/29/2000		
Damage Description:	impacted gw w/in 500ft-0.25mi to sw used by human, endangered species		
Tank #	#1	#2	#3
Status:	Removed from Ground	Removed from Ground	In Use
Status Date:	7/2/2001	7/2/2001	
Capacity:	10000	10000	12000
Install Date:	1/1/1982	1/1/1982	10/1/2001
Last Used Date:			
Above or Below Ground Tank:	below	below	below
Unit ID:			
Construction Material:	Steel	Steel	Composite (steel w/external FRP cladding)
Other Construction Material Description:			
Piping Material:	FRP (fiberglass-reinforced plastic)	FRP (fiberglass-reinforced plastic)	FRP (fiberglass-reinforced plastic)
Other Piping Material Description:			
Tank Contents:			Gasoline
Other Tank Contents Description:			
Tank #	#4		
Status:	In Use		
Status Date:			
Capacity:	12000		
Install Date:	10/1/2001		
Last Used Date:			
Above or Below Ground Tank:	below		
Unit ID:			
Construction Material:	Composite (steel w/external FRP cladding)		
Other Construction Material Description:			
Piping Material:	FRP (fiberglass-reinforced plastic)		
Other Piping Material Description:			
Tank Contents:	Diesel		
Other Tank Contents Description:			

Mapped Sites Details: LPST (MapID 23) Commercial Property



Map ID #23	LPST - State/Tribal Leaking Storage Tank		Source: TCEQ
LPST ID: 114489	Facility ID: 0014670		Banks ID: 114489
MONTALBANO TIRE CO INC 1302 HOUSTON AVE, HOUSTON, TX 77007 Contact: TONY MONTALBANO			Rel. Loc.: 0.4 miles S Elevation: 44.31 feet (-2.52) Soil Type: Vn
Status:	Final concurrence issued, case close		
Leak Discovery Date:	3/3/1999		
Damage Description:	assessment incomplete, no apparent receptors impacted		
Tank #	#1	#2	#3
Status:	Removed from Ground	Removed from Ground	Removed from Ground
Status Date:	2/23/1999	2/23/1999	2/23/1999
Capacity:	2000	3000	2000
Install Date:	1/1/1984	1/1/1952	1/1/1952
Last Used Date:			
Above or Below Ground Tank:	below	below	below
Unit ID:			
Construction Material:	Steel	Steel	Steel
Other Construction Material Description:			
Piping Material:			
Other Piping Material Description:	FRP		
Tank Contents:			
Other Tank Contents Description:			
Tank #	#4		
Status:	Removed from Ground		
Status Date:	2/23/1999		
Capacity:	500		
Install Date:	1/1/1952		
Last Used Date:			
Above or Below Ground Tank:	below		
Unit ID:			
Construction Material:	Steel		
Other Construction Material Description:			
Piping Material:			
Other Piping Material Description:			
Tank Contents:			
Other Tank Contents Description:			

Mapped Sites Details: LPST (MapID 25) *Commercial Property*



Map ID #25	LPST - State/Tribal Leaking Storage Tank	Source: TCEQ
LPST ID: 106613	Facility ID: NA	Banks ID: 106613
PIPE YARD		Rel. Loc.: 0.43 miles W
2313 OVID, HOUSTON, TX 77007		Elevation: 50.33 feet (+3.51)
Contact: CARL DURHAM		Soil Type: Ur
Status:	Final concurrence issued, case close	
Leak Discovery Date:	5/12/1993	
Damage Description:	minor soil contamination - does not require a rap	

Mapped Sites Details: LPST (MapID 26) Commercial Property



Map ID #26	LPST - State/Tribal Leaking Storage Tank		Source: TCEQ
LPST ID: 110680	Facility ID: 0068345		Banks ID: 110680
KING BISCUIT RESTAURANT 1606 WHITE OAK DR, HOUSTON, TX 77009 Contact: PATRICK QUINN			Rel. Loc.: 0.44 miles N Elevation: 40.58 feet (-6.24) Soil Type: An
Status:	Final concurrence issued, case close		
Leak Discovery Date:			
Damage Description:	impacted gw w/in 500ft-0.25mi to sw used by human, endangered species		
Tank #	#1	#2	#3
Status:	Perm. Filled in Place	Perm. Filled in Place	Perm. Filled in Place
Status Date:	12/31/1985	12/31/1985	12/31/1985
Capacity:	2000	4000	5000
Install Date:	12/31/1927	12/31/1927	12/31/1927
Last Used Date:			
Above or Below Ground Tank:	below	below	below
Unit ID:			
Construction Material:	Steel	Steel	Steel
Other Construction Material Description:			
Piping Material:			
Other Piping Material Description:			
Tank Contents:			
Other Tank Contents Description:			

Mapped Sites Details: LPST (MapID 28) *Commercial Property*

Map ID #28	LPST - State/Tribal Leaking Storage Tank		Source: TCEQ
LPST ID: 117688	Facility ID: 0049151		Banks ID: 117688
N MERFISH SUPPLY CO 1818 CENTER ST, HOUSTON, TX 77007 Contact: FRANK LIU		Rel. Loc.: 0.49 miles S Elevation: 51.04 feet (+4.22) Soil Type: Ur	
Status:	Final concurrence pending documentation of well plugging		
Leak Discovery Date:	2/22/1995		
Damage Description:	assessment incomplete, no apparent receptors impacted		
Tank #	#2	#3	
Status:	Removed from Ground	Removed from Ground	
Status Date:	2/22/1995	2/22/1995	
Capacity:	5000	1000	
Install Date:	1/1/1962	8/31/1987	
Last Used Date:			
Above or Below Ground Tank:	below	below	
Unit ID:			
Construction Material:	Steel	Steel	
Other Construction Material Description:			
Piping Material:	Steel	Steel	
Other Piping Material Description:			
Tank Contents:			
Other Tank Contents Description:			

End of LPST Sites Section

Mapped Sites Details: PST (MapID 2) Commercial Property

PST - State/Tribal Storage Tank

Map ID #2	PST - State/Tribal Storage Tank		Source: TCEQ
Facility #: 0067236	TCEQ Customer ID: 101712		Banks ID: 0067236
CLEATIS A RYMAN 1917 HOUSTON Ave, HOUSTON, TX 77007 Contact: C A Ryman			Rel. Loc.: 0.12 miles E Elevation: 44.03 feet (-2.79) Soil Type: Vn
Number of ASTs:	0000		
Number of USTs:	0002		
Tank #	#1	#2	
Status:	Removed from Ground	Removed from Ground	
Status Date:	10/30/1995	10/30/1995	
Capacity:	1000	5000	
Install Date:	12/31/1981	12/31/1981	
Last Used Date:			
Above or Below Ground Tank:	below	below	
Unit ID:			
Construction Material:	Steel	Steel	
Other Construction Material Description:			
Piping Material:	Steel	Steel	
Other Piping Material Description:			
Tank Contents:			
Other Tank Contents Description:			

Mapped Sites Details: PST (MapID 3) *Commercial Property*



Map ID #3	PST - State/Tribal Storage Tank		Source: TCEQ
Facility #: 0010677	TCEQ Customer ID: 050005		Banks ID: 0010677
SPRING STREET REALTY		Rel. Loc.: 0.13 miles W	
1824 SPRING ST, HOUSTON, TX 77007		Elevation: 50.86 feet (+4.04)	
Contact: DEBBIE MCKINLEY		Soil Type: Ur	
Number of ASTs:	0000		
Number of USTs:	0005		
Tank #	#1	#1	#2
Status:	Removed from Ground	Removed from Ground	Removed from Ground
Status Date:	5/9/1991	5/28/2010	5/9/1991
Capacity:	6000	10000	7800
Install Date:	1/1/1956	5/1/1991	1/1/1981
Last Used Date:			
Above or Below Ground Tank:	below	below	below
Unit ID:			
Construction Material:	Steel	FRP (fiberglass-reinforced plastic)	FRP (fiberglass-reinforced plastic)
Other Construction Material Description:			
Piping Material:	Steel	FRP (fiberglass-reinforced plastic)	Steel
Other Piping Material Description:			
Tank Contents:			
Other Tank Contents Description:			
Tank #	#2	#3	
Status:	Removed from Ground	Removed from Ground	
Status Date:	5/28/2010	5/9/1991	
Capacity:	10000	7300	
Install Date:	5/1/1991	1/1/1981	
Last Used Date:			
Above or Below Ground Tank:	below	below	
Unit ID:			
Construction Material:	FRP (fiberglass-reinforced plastic)	FRP (fiberglass-reinforced plastic)	
Other Construction Material Description:			
Piping Material:	FRP (fiberglass-reinforced plastic)	Steel	
Other Piping Material Description:			
Tank Contents:			
Other Tank Contents Description:			

Mapped Sites Details: PST (MapID 6) Commercial Property



Map ID #6	PST - State/Tribal Storage Tank		Source: TCEQ
Facility #: 0034824	TCEQ Customer ID: 067260		Banks ID: 0034824
C & L SUPPLY SUPERVISORY SERV		Rel. Loc.: 0.14 miles E	
2018 HOUSTON AVE, HOUSTON, TX 77007		Elevation: 42.24 feet (-4.58)	
Contact: JAMES EAST		Soil Type: Vn	
Number of ASTs:	0000		
Number of USTs:	0002		
Tank #	#1	#2	
Status:	Removed from Ground	Removed from Ground	
Status Date:	9/5/1991	9/5/1991	
Capacity:	2000	2000	
Install Date:	5/1/1979	5/1/1979	
Last Used Date:			
Above or Below Ground Tank:	below	below	
Unit ID:			
Construction Material:	Steel	Steel	
Other Construction Material Description:			
Piping Material:	Steel	Steel	
Other Piping Material Description:			
Tank Contents:			
Other Tank Contents Description:			

Mapped Sites Details: PST (MapID 8) *Commercial Property*

Map ID #8	PST - State/Tribal Storage Tank	Source: TCEQ
Facility #: 0062261	TCEQ Customer ID: 092457	Banks ID: 0062261
KRC ENTERPRISE INC 1802 CROCKETT, HOUSTON, TX 77007 Contact: C G LATHAM		Rel. Loc.: 0.15 miles SW Elevation: 49.85 feet (+3.03) Soil Type: Vn
Number of ASTs:	0000	
Number of USTs:	0001	
Tank #	#1	
Status:	Removed from Ground	
Status Date:	12/30/1991	
Capacity:	2000	
Install Date:	8/31/1987	
Last Used Date:		
Above or Below Ground Tank:	below	
Unit ID:		
Construction Material:	Steel	
Other Construction Material Description:		
Piping Material:	Steel	
Other Piping Material Description:		
Tank Contents:		
Other Tank Contents Description:		

Mapped Sites Details: PST (MapID 9) Commercial Property

Map ID #9	PST - State/Tribal Storage Tank	Source: TCEQ
Facility #: 0005221	TCEQ Customer ID: 073126	Banks ID: 0005221
TRI-GAS		Rel. Loc.: 0.17 miles E
2200 HOUSTON AVE, HOUSTON, TX 77007		Elevation: 40.17 feet (-6.66)
Contact: FRANK FIRE		Soil Type: Vn
Number of ASTs:	0001	
Number of USTs:	0001	
Tank #	#1	#1
Status:	In use	Removed from Ground
Status Date:		5/27/1994
Capacity:	0002000	8000
Install Date:	5/1/1994	1/1/1975
Last Used Date:		
Above or Below Ground Tank:	above	below
Unit ID:	00174458	
Construction Material:	Steel	Steel
Other Construction Material Description:		
Piping Material:		Steel
Other Piping Material Description:		
Tank Contents:		
Other Tank Contents Description:		

Mapped Sites Details: PST (MapID 10) Commercial Property



Map ID #10	PST - State/Tribal Storage Tank		Source: TCEQ
Facility #: 0064975	TCEQ Customer ID: 096534		Banks ID: 0064975
LA CHARRA NEGRA		Rel. Loc.: 0.18 miles SE	
1800 HOUSTON AVE, HOUSTON, TX 77007		Elevation: 45.27 feet (-1.55)	
Contact: R THOMAS		Soil Type: Vn	
Number of ASTs:	0000		
Number of USTs:	0002		
Tank #	#1	#2	
Status:	In Use	In Use	
Status Date:			
Capacity:	0	0	
Install Date:	8/31/1987	8/31/1987	
Last Used Date:			
Above or Below Ground Tank:	below	below	
Unit ID:			
Construction Material:			
Other Construction Material Description:			
Piping Material:			
Other Piping Material Description:			
Tank Contents:	Gasoline	Gasoline	
Other Tank Contents Description:			

Mapped Sites Details: PST (MapID 12) Commercial Property



Map ID #12	PST - State/Tribal Storage Tank		Source: TCEQ
Facility #: 0036666	TCEQ Customer ID: 068209		Banks ID: 0036666
MARTIN POULTRY EGG & FROZEN FOOD 2002 WHITE ST, HOUSTON, TX 77007 Contact: MICHAEL TAPIEK			Rel. Loc.: 0.23 miles NW Elevation: 51.87 feet (+5.05) Soil Type: Ur
Number of ASTs:	0001		
Number of USTs:	0002		
Tank #	#1	#1	#2
Status:	Out of use	Removed from Ground	Removed from Ground
Status Date:		8/29/1991	8/29/1991
Capacity:	0006000	0	0
Install Date:	1/1/1991	8/31/1987	8/31/1987
Last Used Date:	3/30/1997		
Above or Below Ground Tank:	above	below	below
Unit ID:	00153753		
Construction Material:	Steel	FRP (fiberglass-reinforced plastic)	Steel
Other Construction Material Description:			
Piping Material:			
Other Piping Material Description:			
Tank Contents:			
Other Tank Contents Description:			

Mapped Sites Details: PST (MapID 13) Commercial Property

Map ID #13	PST - State/Tribal Storage Tank		Source: TCEQ
Facility #: 0023607	TCEQ Customer ID: 038268		Banks ID: 0023607
THE CECO CORPORATION 1902 WEBER ST, HOUSTON, TX 77007 Contact: R W WALL			Rel. Loc.: 0.25 miles NW Elevation: 46.86 feet (+.04) Soil Type: Ur
Number of ASTs:	0		
Number of USTs:	2		
Tank #	#1	#2	
Status:	Removed from Ground	Removed from Ground	
Status Date:	10/26/1992	10/26/1992	
Capacity:	8000	2000	
Install Date:	1/1/1971	1/1/1971	
Last Used Date:			
Above or Below Ground Tank:	below	below	
Unit ID:			
Construction Material:	Steel	Steel	
Other Construction Material Description:			
Piping Material:	Steel	Steel	
Other Piping Material Description:			
Tank Contents:			
Other Tank Contents Description:			

End of PST Sites Section

Mapped Sites Details: VCP (MapID 3) Commercial Property**VCP - State/Tribal Voluntary Cleanup**

Map ID #3	VCP - State/Tribal Voluntary Cleanup	Source: TCEQ
VCP ID: 2322	EPA Texas ID/Registration #: NA	Banks ID: VCP_002322
Former Harris Moving & Storage 1824 Spring St., Houston, TX 77007		Rel. Loc.: 0.13 miles W Elevation: 50.86 feet (+4.04)
Contact:		Soil Type: Ur
Status:	Investigation	
Receive Date:	5/20/2010	
Completion Date - Certificate Issued:		
Facility Type:	Commercial Trucking Facility	
Acres:	2.4	
Applicant:	TDC Realty, LLC	
Institutional Controls:		
Site Contamination Information:	VOCs, TPH	
Media Affected:	Groundwater	
Owner Name:	Jon Deal	
Owner Phone:	713-993-9833	
Additional Information:	Remedy:	

Mapped Sites Details: VCP (MapID 7) Commercial Property

Map ID #7	VCP - State/Tribal Voluntary Cleanup	Source: TCEQ
IOP ID: 353	VCP ID: NA	Banks ID: IOP_000353
North Houston Avenue Vacant Lot		Rel. Loc.: 0.15 miles SE
1819 Houston Avenue, Houston, TX 77007-4141		Elevation: 47.32 feet (+.5)
Contact:		Soil Type: Vn
Status:	Withdrawal	
Receive Date:	4/11/2003	
Completion Date - Certificate Issued:		
Facility Type:	Vacant Property	
Acres:	0.833	
Applicant:	Zapar Mohammed	
Institutional Controls:		
Site Contamination Information:	VOCs, TPH	
Media Affected:	Groundwater	
Owner Name:		
Owner Phone:		
Additional Information:		

Mapped Sites Details: VCP (MapID 11) *Commercial Property*

Map ID #11	VCP - State/Tribal Voluntary Cleanup	Source: TCEQ
IOP ID: 533	VCP ID: NA	Banks ID: IOP_000533
1402 Crockett		Rel. Loc.: 0.22 miles SE
1402 Crockett, Houston, TX 77007		Elevation: 42.7 feet (-4.13)
Contact:		Soil Type: Vn
Status:	Completed	
Receive Date:	2/2/2006	
Completion Date - Certificate Issued:	7/26/2006	
Facility Type:	Undeveloped Property	
Acres:	0.344	
Applicant:	Prime Texas Investments, Inc.	
Institutional Controls:		
Site Contamination Information:	VOCs, TPH	
Media Affected:	Soils/Groundwater	
Owner Name:		
Owner Phone:		
Additional Information:		

Mapped Sites Details: VCP (MapID 17) Commercial Property

Map ID #17	VCP - State/Tribal Voluntary Cleanup	Source: TCEQ
VCP ID: 709	EPA Texas ID/Registration #: TXD010790046	Banks ID: VCP_000709
Turco Products, Inc. 1606 Henderson Street, Houston, TX		Rel. Loc.: 0.33 miles SW Elevation: 56.05 feet (+9.23)
Contact:		Soil Type: Vn
Status:	Investigation	
Receive Date:	2/25/1998	
Completion Date - Certificate Issued:		
Facility Type:	Industrial Cleaning/Detergents Plant	
Acres:	1.4	
Applicant:	Akema, Inc.	
Institutional Controls:		
Site Contamination Information:	TPH, VOCs, Metals	
Media Affected:	Soils	
Owner Name:	Joseph T. Clifford, P.E.	
Owner Phone:	215-491-5552	
Additional Information:	Remedy:	

Mapped Sites Details: VCP (MapID 18) *Commercial Property*

Map ID #18	VCP - State/Tribal Voluntary Cleanup	Source: TCEQ
VCP ID: 1672	EPA Texas ID/Registration #: NA	Banks ID: VCP_001672
Wenco Distributors 1615 Dart Street, Houston, TX 77007-4025		Rel. Loc.: 0.37 miles S Elevation: 50.46 feet (+3.64)
Contact:		Soil Type: Ur
Status:	Investigation	
Receive Date:	12/31/2003	
Completion Date - Certificate Issued:		
Facility Type:	Door and Window Manufacturing	
Acres:	3.849	
Applicant:	1610 Dart Partners, LP	
Institutional Controls:		
Site Contamination Information:	VOCs, Metals, TPH	
Media Affected:	Soils/Groundwater	
Owner Name:	Avi Ron	
Owner Phone:	713-869-4815	
Additional Information:	Remedy:	

Mapped Sites Details: VCP (MapID 24) Commercial Property

Map ID #24	VCP - State/Tribal Voluntary Cleanup	Source: TCEQ
IOP ID: 837	VCP ID: NA	Banks ID: IOP_000837
Riviana Foods, Inc. 1702 Taylor St., Houston, TX 77007 Contact:		Rel. Loc.: 0.42 miles SW Elevation: 52.63 feet (+5.81) Soil Type: Vn
Status:	Investigation	
Receive Date:	8/15/2012	
Completion Date - Certificate Issued:		
Facility Type:	Commercial Industrial	
Acres:	10	
Applicant:	Riviana Foods, Inc.	
Institutional Controls:		
Site Contamination Information:	VOCs, SVOCs, Chlorinated Solvents	
Media Affected:	Groundwater	
Owner Name:		
Owner Phone:		
Additional Information:		

Mapped Sites Details: VCP (MapID 27) Commercial Property

Map ID #27	VCP - State/Tribal Voluntary Cleanup	Source: TCEQ
VCP ID: 1967	EPA Texas ID/Registration #: NA	Banks ID: VCP_001967
Triple D Uniform Supply 1216 Houston Avenue, Houston, TX 77007-6234		Rel. Loc.: 0.46 miles S Elevation: 43.83 feet (-2.99)
Contact:		Soil Type: Vn
Status:	Investigation	
Receive Date:	8/30/2006	
Completion Date - Certificate Issued:		
Facility Type:	Commercial Uniform Rental	
Acres:	1.126	
Applicant:	1216 Houston Ave., Ltd.	
Institutional Controls:		
Site Contamination Information:	VOCs, Chlorinated Solvents, TPH	
Media Affected:	Groundwater	
Owner Name:	Irene Cruden	
Owner Phone:	713-961-3877	
Additional Information:	Remedy:	

Mapped Sites Details: VCP (MapID 29) Commercial Property

Map ID #29	VCP - State/Tribal Voluntary Cleanup	Source: TCEQ
VCP ID: 1772	EPA Texas ID/Registration #: NA	Banks ID: VCP_001772
Affordable Feed and Tack 1802 Center Street, Houston, TX 77007-6103 Contact:		Rel. Loc.: 0.49 miles S Elevation: 50.06 feet (+3.24) Soil Type: Ur
Status:	Completed	
Receive Date:	12/30/2004	
Completion Date - Certificate Issued:	3/13/2009	
Facility Type:	Warehouse Complex	
Acres:	4.3085	
Applicant:	Kansas Katy II Aliezer Interest	
Institutional Controls:		
Site Contamination Information:	VOCs, SVOCs, Metals, TPH	
Media Affected:	Soils/Groundwater	
Owner Name:	Ron Aliezer	
Owner Phone:	713-660-6664	
Additional Information:	Remedy:	

End of VCP Sites Section

Mapped Sites Details: HW (MapID 4) Commercial Property**HW - State/Tribal Hazardous Waste**

Map ID #4	HW - State/Tribal Hazardous Waste	Source: TCEQ
Register #: 68510	EPA ID: TXD102696036	Banks ID: 68510
PPG INDUSTRIES 1601 ENVIRONMENTAL 2211 Sabine St, Houston, TX 77007 Contact: CHRISTINE BABKA		Rel. Loc.: 0.13 miles NW Elevation: 50.61 feet (+3.79) Soil Type: Ur
Status:	INACTIVE	
Waste Description:		
Location Description:	2211 Sabine St, Houston, TX	
Additional State ID:	23457	
Permit Number:		
Business Type:	Corporation	
Facility Type:		
Facility Owner Name:	PPG INDUSTRIES INC	
Facility Owner Phone:	1-412-9635827	
Facility Contact Name:		
Facility Contact Phone:		
Company Name:	PPG INDUSTRIES INC	
Operator Address:	260 KAPPA DR, PITTSBURGH, PA 15238	

Mapped Sites Details: HW (MapID 5) Commercial Property



Map ID #5	HW - State/Tribal Hazardous Waste		Source: TCEQ		
Register #: 81983	EPA ID: TX0000132142		Banks ID: 81983		
HALLIBURTON ENERGY SERVICES 1907 SABINE ST, HOUSTON, TX 77007 Contact: LISA REYNA			Rel. Loc.: 0.14 miles SW Elevation: 49.89 feet (+3.07) Soil Type: Vn		
Status:	ACTIVE				
Waste Description:					
Location Description:	1907 Sabine, Houston, TX				
Additional State ID:	37087				
Permit Number:					
Business Type:	Corporation				
Facility Type:					
Facility Owner Name:	HALLIBURTON ENERGY SERVICES INC				
Facility Owner Phone:	1-281-5754220				
Facility Contact Name:					
Facility Contact Phone:					
Company Name:	HALLIBURTON ENERGY SERVICES INC				
Operator Address:	1815 SHEARN ST, HOUSTON, TX 77007				
Waste ID	Waste Code	Waste Description	Disposal Method	Storage Method	Total Annual Waste (lbs)
156670	00314971	PCB CONTAINING ELECTRICAL EQUIPMENT; Initial waste code determination used in inc			
188221	00322051	Coolant oil and water emulsion used generated when steel parts are machined and ma			
205096	0034307H	waste o stalloy; One time shipment.			
242705	00244971	PCB Containing Electrical equipment			
242708	0027204H	residual liquids from aerosol can punch			
242709	00282031	Spent mineral spirits. Cleaning of equipment used to make screen products.			
80457	00022072	Scrap steel for recycling/wire works wire shaping, wrapping, excess damaged fabr			
80462	00102062	Hydraulic oil/hydraulic press/1975			
80463	00092062	Compressor oil/air compressors for house air/1975			
80465	00044882	Scrap lumber/excess-damaged lumber from box building, for shipment/1975 Waste i			
80468	0017109H	Spent caustic/dip tank cleaning of dynadraw/1975 Waste inactivated due to produc			
242703	00224062	RCRA empty containers/general cleanup-daily trash.			
80456	00033072	Scrap metal turnings, shavings; Initial waste code determination used in incorre			
188222	00333101	used absorbents generated from absorbents (pads and booms) used to clean up(coll			
205097	0035204H	residual liquids from aerosol can punch; Initial waste code determination used i			
80458	00052062	Cutting oils/fitting mfg., stainless steel or carbon steels, band saw cutting/19			
80459	00062062	Water soluble cooling oil/turk head shaping/1975			
80460	00072062	Gear oil/draw works lubricant reduce diameter of wire/1975			
80466	0016106H	Caustic solution with metal, chromium/dip tank cleaning to remove dynadraw/1975			
80472	00151051	Spent acid with metals, chromium			
80475	0014104H	Spent acid/screen cleaning/1975			
80477	0013103H	Acid/screen cleaning/1975 Waste inactivated due to product change.			
80478	0020310H	Spent solid filters with chromium/waste water pretreatment/1975			
80480	00181101				

Mapped Sites Details: HW (MapID 5) Commercial Property



Continued from Previous Page

		Rinse water/dip tank acid and caustic rinse to wash off acid solution or caustic
89785	05572031	spent mineral spirits. Cleaning of equipment used to make metal screen products;
149330	00212061	Used Oil
149331	00309992	Plant Trash; Initial waste code determination used in incorrect form and/or class
242702	00013072	Scrap metal turnings and shavings generated from a product process or service ac
242704	00239992	Plant trash
242706	00252051	Coolant oil and water emulsion used generated when steel parts are machined and m
242707	00263101	Used absorbents generated from absorbent pad and booms used to clean up (collect
80461	00082062	30W oil/Lubricate Lead Screen on Wire Wrap Machine/1975
80464	00114892	Floor sweep with oil contamination/general maintenance, spill response-cleanup/1
80467	00191141	Waste water/cooling process water, general maintenance, rinse water, dip tank wa
80481	00124062	RCRA empty containers/general cleanup-daily trash/1975; Initial waste codedeterm

Mapped Sites Details: HW (MapID 14) Commercial Property

Map ID #14	HW - State/Tribal Hazardous Waste	Source: TCEQ
Register #: 40149	EPA ID: TXD980629760	Banks ID: 40149
KWIKFORM AMERICA 1614 HOUSTON AVE, HOUSTON, TX 77007 Contact: EDWARD ADKINS		Rel. Loc.: 0.25 miles SE Elevation: 45.6 feet (-1.22) Soil Type: Vn
Status:	INACTIVE	
Waste Description:		
Location Description:		
Additional State ID:	16571	
Permit Number:		
Business Type:	Unknown	
Facility Type:		
Facility Owner Name:	KWIKFORM AMERICA INC	
Facility Owner Phone:	1-713-4758433	
Facility Contact Name:		
Facility Contact Phone:		
Company Name:	KWIKFORM AMERICA INC	
Operator Address:	PO BOX 4352, PASADENA, TX 77502	

End of HW Sites Section

Mapped Sites Details: RCRA (MapID 4) Commercial Property



RCRA - RCRA

Map ID #4	RCRA - RCRA	Source: EPA	
EPA Handler ID: TXD102696036	Handler Sequence Number: 2	Banks ID: TXD102696036	
PPG INDUSTIRES INC		Rel. Loc.: 0.13 miles NW	
2211 SABINE ST, HOUSTON, TX 77007		Elevation: 50.61 feet (+3.79)	
Contact: CHRISTINE BABKA		Soil Type: Ur	
Owner Name:	PPG INDUSTIRES INC		
Number of Owners:	1		
Operator Name:	PPG INDUSTIRES INC		
Number of Operators:	1		
Mailing Address:	260 KAPPA DR, PITTSBURG, PA 15238		
Contact Name:	CHRISTINE BABKA		
Contact Address:	260 KAPPA DR, PITTSBURG, PA 15238		
Contact Phone:	412-963-5827		
Contact Email Address:			
Government Performance and Results Act (GPRA) Permit:	The facility does not exist on the Operating/Post-Closure Permit Baseline.		
Government Performance and Results Act (GPRA) Corrective Action:	No		
Workload Legend: L=Land Disposal I=Incineration B=Boiler/Industrial Furnace S=Storage T=Treatment			
Permit Workload:	-----		
Closure Workload:	-----		
Post-Closure Workload:	-----		
Subject to Corrective Action:	No		
Subject to Corrective Action 3004:	No		
Subject to Corrective Action Non-TSDF:	No		
Corrective Action Workload:	No		
Generator Status:	Not a Generator		
Nuclear Mixed Waste Handler:	No		
Onsite Burner Exemption:	No		
Furnace Exemption:	No		
Underground Injection Activity:	No		
NAIC Description 1:			
NAIC Description 2:			
NAIC Description 3:			
NAIC Description 4:			
Federal Generator Class:	Not a Generator, Verified		
State Generator Class:			
Environmental Controls in Place:	No		
Institutional Controls in Place:	No		
Groundwater Controls in Place:	No		
Significant Non-Compliance:	No		
Unaddressed Significant Non-Complier:	No		
Addressed Significant Non-Complier:	No		
Significant Non-Complier with Compliance Schedule:	No		
Enforcement Description	Responsible Enforcement Agency	Enforcement Date	Penalty Description
Evaluation Description	Responsible Agency	Evaluation Date	Violation Found
Violation Description	Violation Determined By	Violation Date	Actual Resolution Date
Scheduled Resolution Date			
Hazardous Waste Description			
DESCRIPTION			
IGNITABLE WASTE			

Mapped Sites Details: RCRA (MapID 14) Commercial Property



Map ID #14	RCRA - RCRA	Source: EPA		
EPA Handler ID: TXD980629760	Handler Sequence Number: 2	Banks ID: TXD980629760		
KWIKFORM AMERICA INC 1614 S HOUSTON RD, HOUSTON, TX 77002 Contact: EDWARD ADKINS		Rel. Loc.: 0.25 miles SE Elevation: 45.6 feet (-1.22) Soil Type: Vn		
Owner Name:	KWIKFORM AMERICA INC			
Number of Owners:	1			
Operator Name:	KWIKFORM AMERICA INC			
Number of Operators:	1			
Mailing Address:	PO BOX 4352, PASADENA, TX 77502			
Contact Name:	EDWARD ADKINS			
Contact Address:	PO BOX 4352, PASADENA, TX 77502			
Contact Phone:	713-475-8433			
Contact Email Address:				
Government Performance and Results Act (GPRA) Permit:	The facility does not exist on the Operating/Post-Closure Permit Baseline.			
Government Performance and Results Act (GPRA) Corrective Action:	No			
Workload Legend: L=Land Disposal I=Incineration B=Boiler/Industrial Furnace S=Storage T=Treatment				
Permit Workload:	-----			
Closure Workload:	-----			
Post-Closure Workload:	-----			
Subject to Corrective Action:	No			
Subject to Corrective Action 3004:	No			
Subject to Corrective Action Non-TSDF:	No			
Corrective Action Workload:	No			
Generator Status:	Not a Generator			
Nuclear Mixed Waste Handler:	No			
Onsite Burner Exemption:	No			
Furnace Exemption:	No			
Underground Injection Activity:	No			
NAIC Description 1:	General Freight Trucking, Local			
NAIC Description 2:				
NAIC Description 3:				
NAIC Description 4:				
Federal Generator Class:	Not a Generator, Verified			
State Generator Class:				
Environmental Controls in Place:	No			
Institutional Controls in Place:	No			
Groundwater Controls in Place:	No			
Significant Non-Compliance:	No			
Unaddressed Significant Non-Complier:	No			
Addressed Significant Non-Complier:	No			
Significant Non-Complier with Compliance Schedule:	No			
Enforcement Description	Responsible Enforcement Agency	Enforcement Date	Penalty Description	
Evaluation Description	Responsible Agency	Evaluation Date	Violation Found	
Violation Description	Violation Determined By	Violation Date	Actual Resolution Date	Scheduled Resolution Date
Hazardous Waste Description				
CORROSIVE WASTE DESCRIPTION				

Continued from Previous Page

End of RCRA Sites Section

Dataset Descriptions and Sources *Commercial Property*



Dataset	Source	Dataset Description	Update Schedule	Data Requested	Data Obtained	Data Updated	Source Updated
NPL -- National Priority List	EPA	NPL is the list of high priority hazardous waste sites in the United States eligible for long-term remedial action financed under the federal Superfund program and CERCLIS. Also known as Superfund sites, the EPA will only add sites to the NPL list based upon completion of the Hazard Ranking System (HRS) screening, public solicitation of comments about the proposed site, and after all comments have been addressed.	Quarterly	07/18/2013	04/24/2013	04/24/2013	01/31/2012
DNPL -- Delisted National Priority List	EPA	DNPL is a list of all sites that have been deleted from the EPA NPL list. These sites are taken off the NPL list usually due to no further response or remedial action being required on them. Notices to delete NPL sites are published in the Federal Register and become effective unless the EPA receives significant adverse or critical comments during the 30-day public comment period.	Quarterly	07/18/2013	04/24/2013	04/24/2013	01/31/2012
CER -- CERCLIS	EPA	CERCLIS sites come from the Comprehensive Environmental Response, Compensation, and Liability Act, a federal law designed to clean up abandoned hazardous waste sites. These sites are either proposed, listed or under review currently to be a part of the National Priority List.	Quarterly	07/18/2013	04/24/2013	04/24/2013	01/31/2012
CER NFRAP -- CERCLIS NFRAP	EPA	CERCLIS sites designated 'No Further Remedial Action Planned' NFRAP have been removed from CERCLIS. NFRAP sites may be sites where, following an initial investigation, no contamination was found, contamination was removed quickly without the site being placed on the NPL, or the contamination was not serious enough to require Federal Superfund action or NPL consideration.	Quarterly	07/18/2013	04/24/2013	04/24/2013	01/31/2012
RCRA COR -- RCRA CORRACTS	EPA	These sites are registered hazardous waste generators or handlers that fall under the Resource Conservation and Recovery Act (RCRA), and subject to corrective action activity.	Quarterly	06/07/2013	06/07/2013	06/08/2013	05/09/2013
RCRA TSD -- RCRA non-CORRACTS TSD	EPA	This database lists all treatment, storage and disposal of hazardous material sites that fall under the Resource Conservation and Recovery Act (RCRA). All hazardous waste TSD facilities are required to notify EPA of their existence.	Quarterly	06/07/2013	06/07/2013	06/08/2013	05/09/2013
RCRA GEN -- RCRA Generators	EPA	The EPA regulates all Hazardous Waste Generators subject to the Resource Conservation and Recovery Act (RCRA). They are classified by the quantity of hazardous waste generated. A Small Quantity Generator (SQG) generates between 100kg and 1,000 kg of waste per month. A Large Quantity Generator (LQG) generates over 1,000 kg of waste per month. A Conditionally Exempt SQG (CEG) generates less than 100 kg of waste per month.	Quarterly	06/07/2013	06/07/2013	06/08/2013	05/09/2013
FED BWN -- Federal Brownfields	EPA	A listing of sites that assist the EPA in collecting, tracking, and updating information of sites in relation to the Small Business Liability Relief and Brownfields Revitalization Act. These sites are real property that is either abandoned or underutilized where redevelopment or expansion is complicated by real or perceived environmental contamination.	Quarterly	06/03/2013	06/05/2013	06/06/2013	06/05/2013
FED IC -- Federal Institutional Control	EPA	This is a listing of Brownfield Management System (BMS) sites that have had Institutional Controls (ICs) placed on them. ICs are administrative restrictions, such as legal controls, that help minimize the potential for human exposure to known contamination by ensuring appropriate land or resource use. ICs are meant to supplement Engineering Controls and will rarely be the sole remedy at a site. ICs are a type of Activity and Use Limitation (AUL).	Quarterly	06/03/2013	06/05/2013	06/06/2013	06/05/2013
FED EC -- Federal Engineering Control	EPA	This is a listing of Brownfield Management System (BMS) sites that have had Engineering Controls (ECs) placed on them. ECs are physical methods or modifications put into place on a site to reduce or eliminate the possibility of human exposure to known contamination. ECs are a type of Activity and Use Limitation (AUL).	Quarterly	06/03/2013	06/05/2013	06/06/2013	06/05/2013

Dataset Descriptions and Sources *Commercial Property*



Dataset	Source	Dataset Description	Update Schedule	Data Requested	Data Obtained	Data Updated	Source Updated
ERNS -- ERNS List	EPA/National Response Center	ERNS is a national database used to store information on unauthorized releases of oil and hazardous substances that have been reported to the National Response Center since 2001. The NRC is the sole federal point of contact for reporting oil and chemical spills. Prior to 2001 this information was maintained by the EPA.	Annually	01/11/2013	01/18/2013	01/18/2013	12/31/2012
ST NPL -- State/Tribal Equivalent NPL	TCEQ	This database contains sites determined by the TCEQ that may constitute an imminent and substantial endangerment to public health and safety or to the environment due to a release or threatened release of hazardous substances into the environment.	Quarterly	05/29/2013	05/30/2013	06/01/2013	05/30/2013
ST CER -- State/Tribal Equivalent CERCLIS	NA	This database is not currently available from this state. If this state does make this database available in the future, Banks Environmental Data will obtain it for reporting purposes.	NA	N/A	N/A	N/A	N/A
SWLF -- State/Tribal Disposal or Landfill	TCEQ	The SWLF database contains records of municipal solid waste facilities that may accept various types of municipal solid waste for processing or disposal, depending on the type of facility. A Municipal Solid Waste facility may also accept certain special wastes and non-hazardous industrial solid wastes if approved by the TCEQ executive director.	Quarterly	05/16/2013	05/20/2013	06/01/2013	05/16/2013
SWLF -- State/Tribal Disposal or Landfill	TCEQ	This database is a listing of closed and abandoned municipal solid waste landfills. The sites included are either unauthorized (UNUM_) or permitted (PERMAPP_).	NA	N/A	N/A	N/A	N/A
LPST -- State/Tribal Leaking Storage Tank	TCEQ	This database contains information on leaking storage tanks, equipment failures, compliance, and releases in the state.	Quarterly	06/05/2013	06/05/2013	06/05/2013	06/05/2013
LPST -- State/Tribal Leaking Storage Tank	EPA	The Tribal LUST database (maintained by EPA Region 6) provides information on leaking underground storage tank on tribal lands in Louisiana, Arkansas, Oklahoma, New Mexico and Tribal Nations.	Quarterly	05/03/2013	05/10/2013	05/11/2013	05/10/2013
PST -- State/Tribal Storage Tank	TCEQ	This database contains information on above and underground storage tanks, compliance, and releases in the state.	Quarterly	06/03/2013	06/03/2013	06/03/2013	05/31/2013
PST -- State/Tribal Storage Tank	EPA	The Tribal UST database (maintained by EPA Region 6) provides underground storage tank information on tribal lands in Louisiana, Arkansas, Oklahoma, New Mexico and Tribal Nations.	Quarterly	05/03/2013	05/06/2013	05/06/2013	05/06/2013
ST IC -- State/Tribal Institutional Control	TCEQ	This database includes Voluntary Cleanup Program (VCP) or Innocent Operator Program (IOP) sites that have been remediated and have had Institutional Controls (ICs) placed on them. ICs are administrative restrictions, such as legal controls, that help minimize the potential for human exposure to known contamination by ensuring appropriate land or resource use.	Quarterly	05/23/2013	06/24/2013	06/24/2013	05/10/2013
ST IC -- State/Tribal Institutional Control	RRC	The Railroad Commission of Texas Voluntary Cleanup Program provides an incentive to remediate Oil & Gas related pollution by participants as long as they did not cause or contribute to the contamination.	Quarterly	05/23/2013	06/24/2013	06/24/2013	06/24/2013
ST EC -- State/Tribal Engineering Control	TCEQ	This database includes Voluntary Cleanup Program (VCP) or Innocent Operator Program (IOP) sites that have been remediated and have had Engineering Controls (ECs) placed on them. ECs are physical methods or modifications put into place on a site to reduce or eliminate the possibility of human exposure to known contamination.	Quarterly	05/23/2013	06/24/2013	06/24/2013	05/10/2013

Dataset Descriptions and Sources *Commercial Property*



Dataset	Source	Dataset Description	Update Schedule	Data Requested	Data Obtained	Data Updated	Source Updated
VCP -- State/Tribal Voluntary Cleanup	TCEQ	This database contains sites from both the Voluntary Cleanup Program (VCP) and the Innocent Operator Program (IOP). The VCP records contain information on contaminated sites that private parties have cleaned up through assistance from the State in the form of administrative, technical, and legal incentives. The IOP records are sites that have received certificates from the State acknowledging that their property is contaminated as a result of a release or migration of contaminants from a source or sources not located on the property, and they did not cause or contribute to the source or sources of contamination.	Quarterly	05/23/2013	06/24/2013	06/24/2013	05/10/2013
VCP -- State/Tribal Voluntary Cleanup	RRC	The Railroad Commission of Texas Voluntary Cleanup Program provides an incentive to remediate Oil & Gas related pollution by participants as long as they did not cause or contribute to the contamination.	Quarterly	05/23/2013	06/24/2013	06/24/2013	06/24/2013
ST BWN -- State/Tribal Brownfield	TCEQ	Brownfield sites are former industrial properties that lie dormant or underutilized due to liability associated with real or perceived contamination. In Texas, the TCEQ, in close partnership with the EPA and other federal, state, and local redevelopment agencies, and stakeholders, is facilitating cleanup, transferability, and revitalization of Brownfield's through the development of regulatory, tax, and technical assistance tools.	Quarterly	06/24/2013	06/24/2013	06/24/2013	03/11/2013
ST BWN -- State/Tribal Brownfield	RRC	The Railroad Commission of Texas' Voluntary Cleanup Program (RRC-VCP) provides an incentive to remediate Oil & Gas related pollution by participants as long as they did not cause or contribute to the contamination. Applicants to the program receive a release of liability to the state in exchange for a successful cleanup.	Quarterly	05/24/2013	06/24/2013	06/24/2013	06/24/2013
HW -- State/Tribal Hazardous Waste	TCEQ	This database contains information on facilities which store, process, or dispose of hazardous waste as maintained by the Industrial and Hazardous Waste Permits section of the TCEQ.	Quarterly	06/03/2013	06/03/2013	06/03/2013	05/03/2013
RCRA -- RCRA	EPA	This database lists all sites that fall under the Resource Conservation and Recovery Act (RCRA) and are not classifiable as treatment, storage, disposers of hazardous material, hazardous waste generator or subject to corrective action activity.	Quarterly	06/07/2013	06/07/2013	06/08/2013	05/09/2013
DRYC -- Dry Cleaners	TCEQ	Dry Cleaner data houses both the DCRP Program information and PERC information released by the TCEQ. The DCRP database contains records funded for state-lead clean up of dry cleaner related contaminated sites. The DCRP administers the Dry Cleaning Facility Release Fund to assist with remediation of contamination caused by dry cleaning solvents. There are two listings from this program: LIST#1 - A historic listing of any facility that registered with the DCRP indicating whether or not the facility has used Perchloroethylene (PERC) in the past. LIST#2 - A Prioritization list of dry cleaner sites. Facilities on this list will be investigated in order to determine the existence and or extent of possible contamination. Facilities which are not current on their DCRP payments get dropped from the program. Banks Environmental Data DOES NOT REMOVE these listings from our database so that we may present a more complete historical listing of facilities that may or may not have used PERC in the past.	Quarterly	05/30/2013	06/13/2013	06/13/2013	05/30/2012

Disclaimer *Commercial Property*

The Banks Environmental Data Regulatory Database Report was prepared based upon data obtained from State, Tribal, and Federal sources known to Banks Environmental Data at the time the data was obtained. Great care has been taken by Banks in obtaining the best available data from the best available sources. However, there is a possibility that there are sources of data applicable or pertaining to this report's target property, and/or surrounding properties, to which Banks does not have access or has not accessed. Furthermore, although Banks Environmental Data performs quality assurance and quality control on all data, including data it obtains, Banks recognizes that inaccuracies in data from these sources may, and do, exist; accordingly, inaccurate data may have been used or relied upon in the preparation of this report. Even though Banks Environmental Data performs a thorough and diligent search to locate and fix any inaccuracies in the data relied upon in the preparation of this report and this report, Banks cannot guarantee or warrant the accuracy of the locations, information, data, or report. The purchaser of this report accepts this report "as is" and assumes all risk related to any potential inaccuracy contained in the report or not reported in it, whether due to a reliance by Banks Environmental Data on inaccurate data, or for any other reason [including but not limited to the negligence or express negligence of Banks Environmental Data]. If this report is being used for the Records Review section of a Phase I Site Assessment according to the ASTM 1527-05, for EPA's All Appropriate Inquiry, or for any other purpose (public or private), all liability and responsibility is assumed by the Environmental Professional or other individual or entity acquiring the report.